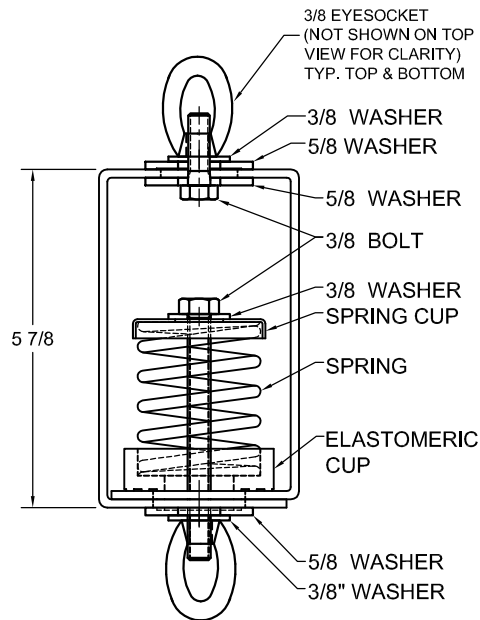
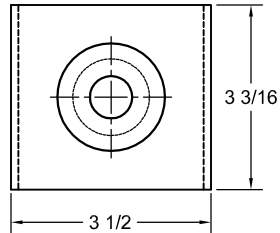


218R-103892 REV.: 1

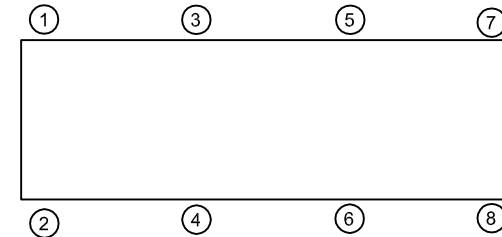
REV.	DESCRIPTION	DATE	BY

**NOTES:**

1. STANDARD FINISH: HANGER BOX; GALVANIZED STEEL, SPRING - POWDER COAT.
2. ALL DIMENSIONS IN INCHES. INTERPRET PER ANSI Y14.
3. ALL DIMENSIONS ARE FOR REFERENCE, DIMENSIONS SHOWN AS NOMINAL.
4. ALL SPRINGS ARE DESIGNED WITH MINIMUM 50% OVER-TRAVEL.
5. HANGER BOXES ARE AVAILABLE PRE-COMPRESSED UP TO THEIR DESIGNATED MAX. LOAD. PERCENTAGE OF PRE-COMPRESSION TO BE DETERMINED BY ENGINEERED APPLICATION OR AS REQUESTED BY CUSTOMER. CONSULT FACTORY FOR POSSIBLE ADDITIONAL PARAMETERS AND OR LIMITATIONS.
6. SOME ASSEMBLIES MAY INCLUDE ADDITIONAL OR VARIOUS SIZE WASHERS.

STANDARD SHSC-1C HANGER ARRANGEMENT

MODEL DESIGNATION	MAX. LOAD (LBS.)	DEFL. (IN.)	SPRING (LBS.)	COLOR SPRING
SHSC-1C-60	60	1.3	16	BLUE
SHSC-1C-100	100	1.3	30	ORANGE
SHSC-1C-165	165	1.2	45	BROWN
SHSC-1C-260	260	1	80	BLACK
SHSC-1C-370	370	0.8	105	YELLOW

**ISOLATOR SELECTIONS**

LOC 1:	LOC 2:
LOC 3:	LOC 4:
LOC 5:	LOC 6:
LOC 7:	LOC 8:
CUSTOMER EQP'T. TAG:	

NOTE: MATERIAL SHOWN IS FOR (1) SET.

OTHER MATERIALS, COMPOUNDS, OR FINISHES WITH EQUAL OR SUPERIOR PROPERTIES MAY BE SUBSTITUTED AS THEY BECOME AVAILABLE.

CERTIFIED FOR:

JOB NAME: _____

CUSTOMER : _____

CUSTOMER P.O.: _____

SALES ORDER: _____

MODEL SHSC-1C 60-370 LBS.
LOW PROFILE SPRING ISOLATOR
WITH EYESOCKET
1 INCH DEFLECTION



THE VMC GROUP
The Power of Together
Bloomington, NJ 07403
Houston, TX 77041

SCALE :

NONE

SHEET:



DRAWING NO.:

REVISION