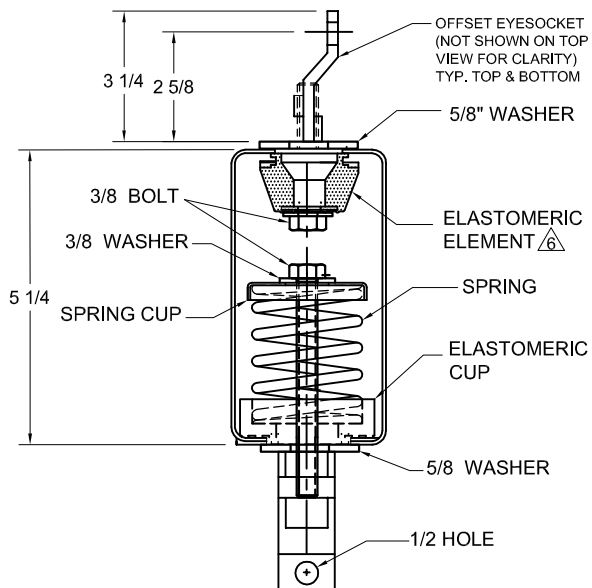
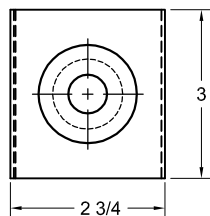


REV.	DESCRIPTION	DATE	BY

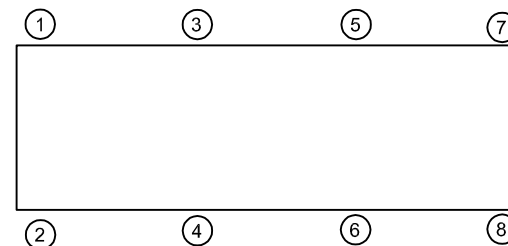


MODEL RSHSC-1C ELASTOMERIC & SPRING HANGER 1" DEFLECTION

HANGER	RATED LOAD (LBS)	RATED DEFLECTION (IN)	SPRING RATE (LBS/IN)	COLOR CODE
RSHSC-1C-15	15	1.00	15	DK. GRAY
RSHSC-1C-25	25	1.00	25	GREEN
RSHSC-1C-50	50	1.00	50	BLUE
RSHSC-1C-100	100	1.00	100	TAN
RSHSC-1C-150	150	1.00	150	RED
RSHSC-1C-250	250	0.83	300	BLACK
RSHSC-1C-300	300	0.75	400	DK YELLOW
RSHSC-1C-370	370	0.75	493	YELLOW
RSHSC-1C-520N ¹	520	0.75	693	YELLOW / GREEN

NOTES:

1. TWO NESTED SPRINGS YIELD THIS LOAD. THE COLOR CODE IS FOR OUTER SPRING/ INNER SPRING.



NOTES:

- STANDARD FINISH: HANGER BOX - PAINTED, POWDER COATED OR GALVANIZED STEEL, SPRING - POWDER COAT.
- ALL DIMENSIONS IN INCHES. INTERPRET PER ANSI Y14.
- ALL DIMENSIONS ARE FOR REFERENCE, DIMENSIONS SHOWN AS NOMINAL.
- ALL SPRINGS ARE DESIGNED WITH MINIMUM 50% OVER-TRAVEL.
- HANGER BOXES ARE AVAILABLE PRE-COMPRESSED UP TO THEIR DESIGNATED MAX. LOAD. PERCENTAGE OF PRE-COMPRESSION TO BE DETERMINED BY ENGINEERED APPLICATION OR AS REQUESTED BY CUSTOMER. CONSULT FACTORY FOR POSSIBLE ADDITIONAL PARAMETERS AND OR LIMITATIONS.
- HANGER BOXES WITH AN ELASTOMERIC ELEMENT HAVE UP TO AN ADDITIONAL 1/2" NOMINAL DEFLECTION.
- SOME ASSEMBLIES MAY INCLUDE ADDITIONAL OR VARIOUS SIZE WASHERS.

ISOLATOR SELECTIONS

LOC 1:	LOC 2:
LOC 3:	LOC 4:
LOC 5:	LOC 6:
LOC 7:	LOC 8:
CUSTOMER EQP'T. TAG:	

NOTE: MATERIAL SHOWN IS FOR (1) SET.

OTHER MATERIALS, COMPOUNDS, OR FINISHES WITH EQUAL OR SUPERIOR PROPERTIES MAY BE SUBSTITUTED AS THEY BECOME AVAILABLE.

CERTIFIED FOR:

JOB NAME: _____
 CUSTOMER: _____
 CUSTOMER P.O.: _____
 SALES ORDER: _____

MODEL RSHSC-1C 15-520 LBS.
 ELASTOMERIC AND SPRING HANGER
 WITH OFFSET EYESOCKET
 1 INCH DEFLECTION



THE VMC GROUP
The Power of Together
 Bloomingdale, NJ 07403
 Houston, TX 77041

SCALE:

NONE

SHEET:



DRAWING NO.:

REVISION