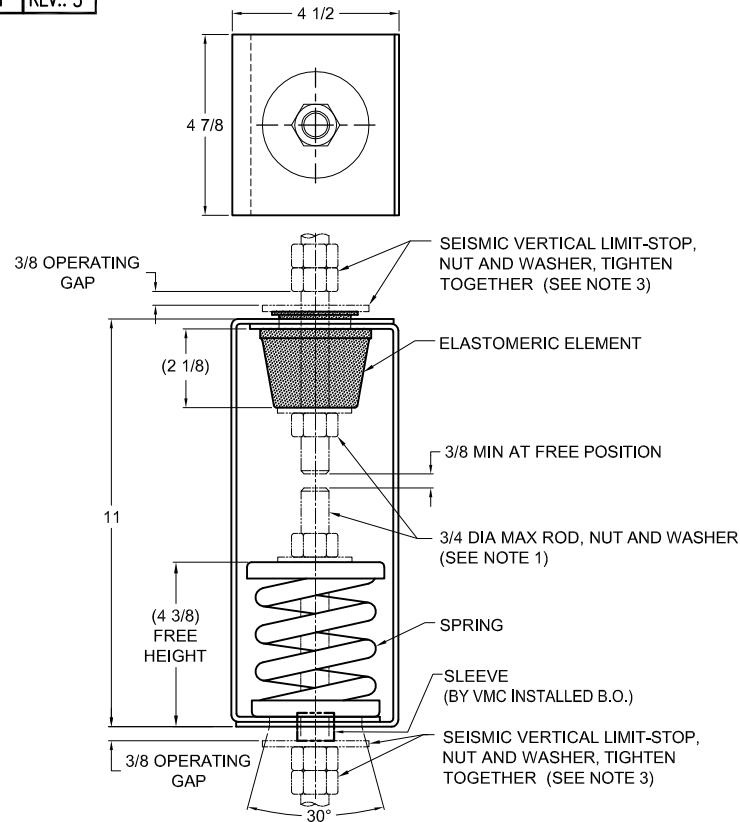


135R-101211 REV.: 5

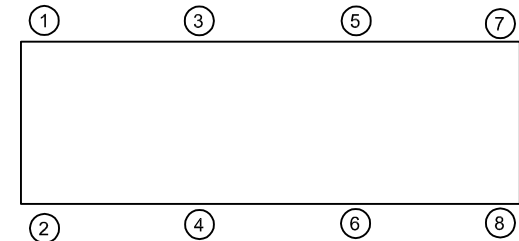
| REV. | DESCRIPTION | DATE | BY |
|------|-------------|------|----|
| | | | |

**NOTES:**

- HANGER RODS, NUTS AND WASHERS, AS SHOWN, NOT BY THE VMC GROUP.
- STANDARD FINISH: HANGER BOX - PAINTED, POWDER COATED OR GALVANIZED STEEL, SPRING - POWDER COAT.
- SEISMIC VERTICAL-STOP HARDWARE REQUIRED FOR SEISMIC APPLICATIONS, NOT BY THE VMC GROUP. INSTALL WASHER .165 THK. MIN. X 2-7/8 O.D. MIN. WITH REQUIRED INSIDE DIAMETER TO ACCOMMODATE ROD SIZE IN USE. THIS CAN BE ACCOMPLISHED BY USING A SINGLE WASHER OR BY STACKING NOT MORE THAN TWO WASHERS.
- ALL DIMENSIONS IN INCHES. INTERPRET PER ANSI Y14.
- ALL DIMENSIONS ARE FOR REFERENCE, DIMENSIONS SHOWN AS NOMINAL.
- ALL SPRINGS ARE DESIGNED WITH MINIMUM 50% OVER-TRAVEL.
- HANGER BOXES ARE AVAILABLE PRE-COMPRESSED UP TO THEIR DESIGNATED MAX. LOAD. PERCENTAGE OF PRE-COMPRESSION TO BE DETERMINED BY ENGINEERED APPLICATION OR AS REQUESTED BY CUSTOMER. CONSULT FACTORY FOR POSSIBLE ADDITIONAL PARAMETERS AND OR LIMITATIONS.
- HANGER BOXES WITH AN ELASTOMERIC ELEMENT HAVE UP TO AN ADDITIONAL 1/2" NOMINAL DEFLECTION.
- RATED DEFLECTIONS ARE WITHIN 25% OF NOMINAL. HIGHER DEFLECTIONS ARE ALLOWED IF THEY MEET SPECIFICATIONS.

**TYPE HRSA-1E ELASTOMERIC & SPRING ANGULARITY HANGERS
FOR 1" NOMINAL DEFLECTION**

| HANGER | RATED LOAD (LBS) | DEFLECTION (IN) | SPRING RATE (LB/IN) | SPRING COLOR CODE | ELEMENT LOAD & COLOR CODE |
|--------------|------------------|-----------------|---------------------|-------------------|---------------------------|
| HRSA-1E-195 | 195 | 2.21 | 100 | DK BLUE | RE-C-380 BLACK |
| HRSA-1E-400 | 400 | 1.70 | 303 | BLACK | RE-C-520 RED |
| HRSA-1E-650 | 650 | 1.44 | 619 | RED | RE-C-840 GREEN |
| HRSA-1E-1000 | 1000 | 1.47 | 1000 | TAN | RE-C-1070 GRAY |
| HRSA-1E-1400 | 1400 | 1.35 | 1400 | PINK | RE-C-2000 BLUE |
| HRSA-1E-2000 | 2000 | 1.61 | 1802 | WHITE | RE-C-2000 BLUE |

**ISOLATOR SELECTIONS**

| | |
|----------------------|--------|
| LOC 1: | LOC 2: |
| LOC 3: | LOC 4: |
| LOC 5: | LOC 6: |
| LOC 7: | LOC 8: |
| CUSTOMER EQP'T. TAG: | |

NOTE: MATERIAL SHOWN IS FOR (1) SET.

OTHER MATERIALS, COMPOUNDS, OR FINISHES WITH EQUAL OR SUPERIOR PROPERTIES MAY BE SUBSTITUTED AS THEY BECOME AVAILABLE.

CERTIFIED FOR:

JOB NAME: _____

CUSTOMER: _____

CUSTOMER P.O.: _____

SALES ORDER: _____

MODEL HRSA-1E 195-2000 LBS.
ELASTOMERIC AND SPRING ANGULARITY
HANGERS
1 INCH DEFLECTION



THE VMC GROUP
The Power of Together
 Bloomingdale, NJ 07403
 Houston, TX 77041

SCALE:

NONE

SHEET:

Member
VISCMA

DRAWING NO.:

REVISION