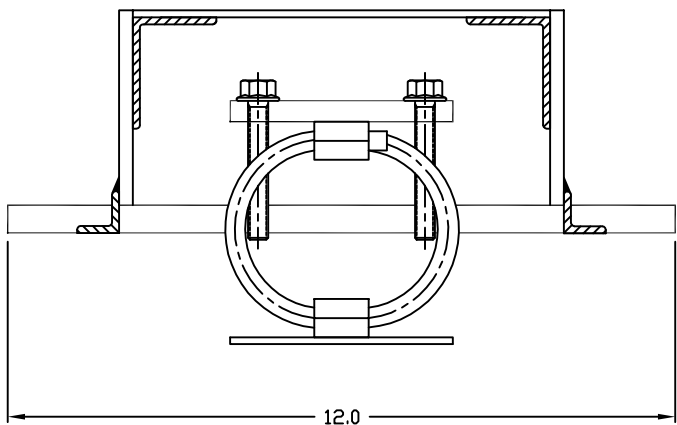
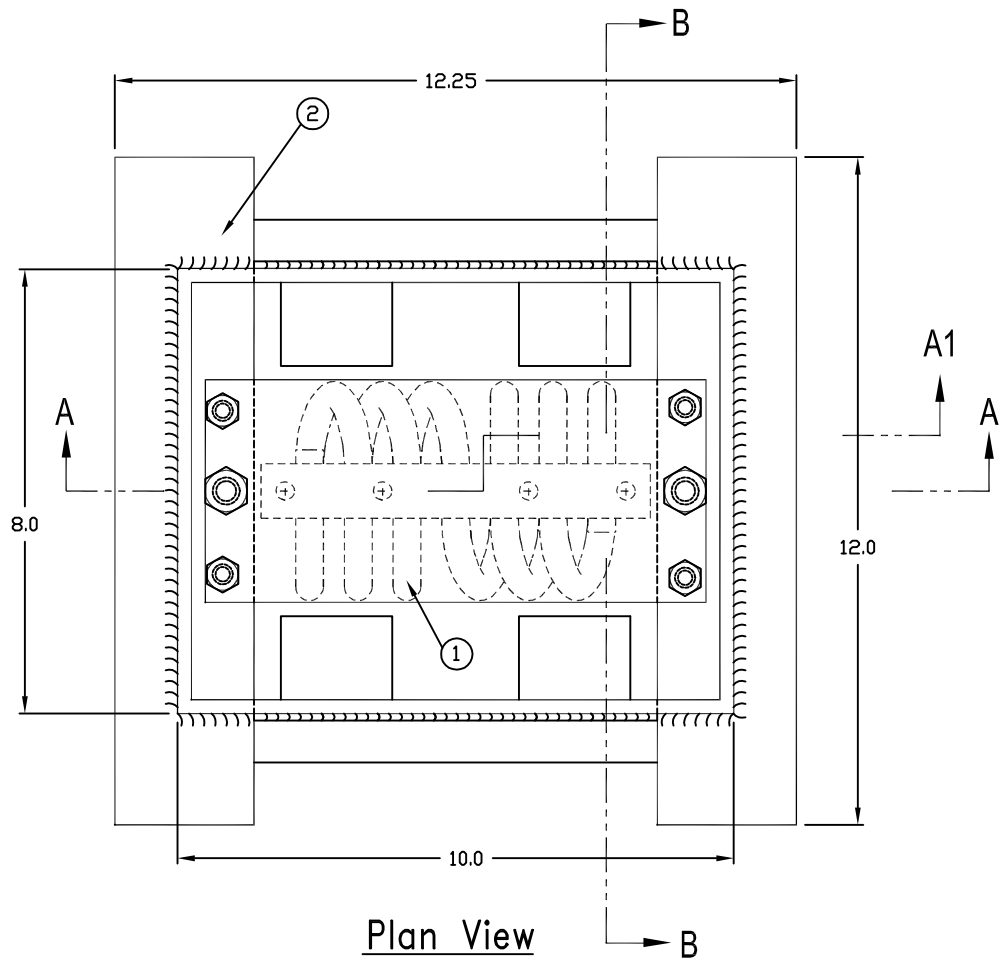


REV.	DESCRIPTION	DATE	BY



OTHER MATERIALS, COMPOUNDS, OR FINISHES WITH EQUAL OR SUPERIOR PROPERTIES MAY BE SUBSTITUTED AS THEY BECOME AVAILABLE.

CERTIFIED FOR:

JOB NAME: _____

CUSTOMER: _____

CUSTOMER P.O.: _____

SALES ORDER: _____

MODEL HCWR WIRE ROPE ISOLATOR



THE VMC GROUP
The Power of Together
 Bloomingdale, NJ 07403
 Houston, TX 77041

SCALE :

NONE

SHEET:



DRAWING NO.:

REVISION

217R-103760 REV.: 1

REV.	DESCRIPTION	DATE	BY

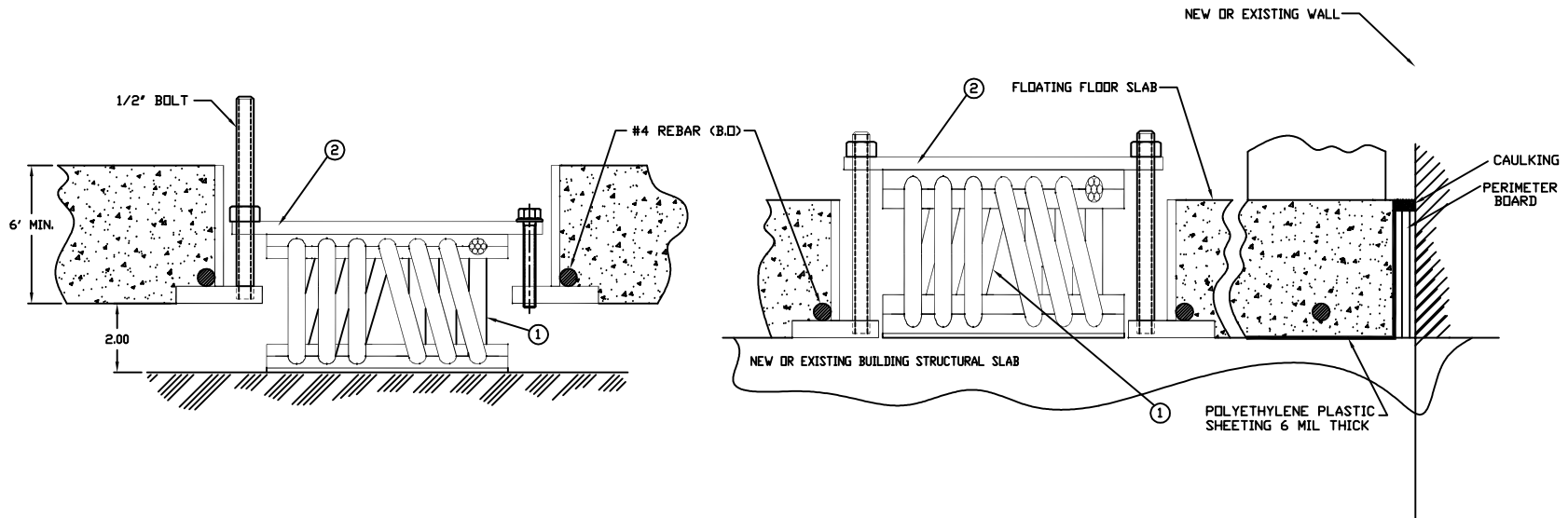
FLOOR SYSTEM ADJUSTMENT PROCEDURE:

1. STRUCTURAL FLOOR MUST BE LEVEL AT MOUNT LOCATIONS, AS MOUNTS ARE USED AS SCREED POINTS SMOOTHNESS AT MOUNT LOCATIONS TO BE $\pm 0.03'$.
2. SET CONCRETE PERIMETER FORMS AS REQUIRED.
3. CEMENT PERIMETER ISOLATION BOARDS TO WALLS, FORMS, AROUND COLUMNS, ETC. AS REQUIRED.
4. SNAP CHALK LINES TO LOCATE MOUNTS ON THE SUB-FLOOR. INDICATE MOUNT LOCATIONS SO THAT THEY ARE VISIBLE THROUGH THE POLYETHYLENE SHEETING.
5. LAY SHEETING OVER THE ENTIRE FLOOR AREA. LAP UP AND OVER THE PERIMETER BOARDS AND TAPE IN POSITION. OVERLAP AT LEAST 12" AT SEAMS. TAPE SEAL ALL SEAMS.

6. PLACE MOUNT HOUSING (WITHIN ISOLATORS INSERTED IN ACCORDANCE WITH SUBMITTAL DRAWING, ENSURE THAT THE COVER PLATE IS IN PLACE.
7. CAULK SEAM BETWEEN COVER PLATE AND HOUSING.
8. INSTALL REINFORCING AS PER THE CONTRACT DRAWINGS, AND APPROVED STANDARD PRACTICE.
9. POUR CONCRETE TO THE REQUIRED THICKNESS AND FINISH FLUSH WITH THE TOPS OF THE FLOATING FLOOR MOUNTS. POUR CONCRETE IN ONE CONTINUOUS POUR. INSURE NO VOIDS AROUND THE REINFORCING AND THE MOUNTS. CAUTION: DO NOT SHIFT OR LIFT THE MOUNTS.
10. AFTER CONCRETE HAS FULLY CURED, FLOOR IS TO BE LIFTED BY AN APPROVED VMC CONTRACTOR FAMILIAR WITH NON-LINEAR ISOLATION SYSTEMS.

INSTALLATION MATERIALS:

1. POLYETHYLENE PLASTIC SHEETING, 6 MIL THICK
2. FLOATING FLOOR SPRING MOUNTS AS REQUIRED
3. PERIMETER ISOLATION BOARD: 3/4" THICK, 10 LB DENSITY FIBERGLASS OR 1/2" THICK NEOPRENE SPONGE RUBBER.
4. CAULKING COMPOUND: NON-HARDENING, NON-DRYING.
5. FLOATING FLOOR DRAINS AS REQUIRED.
6. RISER SEALS AS REQUIRED.



OTHER MATERIALS, COMPOUNDS, OR FINISHES WITH EQUAL OR SUPERIOR PROPERTIES MAY BE SUBSTITUTED AS THEY BECOME AVAILABLE.

CERTIFIED FOR:

JOB NAME: _____

CUSTOMER: _____

CUSTOMER P.O.: _____

SALES ORDER: _____

MODEL HCWR WIRE ROPE ISOLATOR

THE VMC GROUP
The Power of Together
Bloomington, NJ 07403
Houston, TX 77041

SCALE:

NONE

SHEET:



DRAWING NO.:

REVISION