

NOTES:

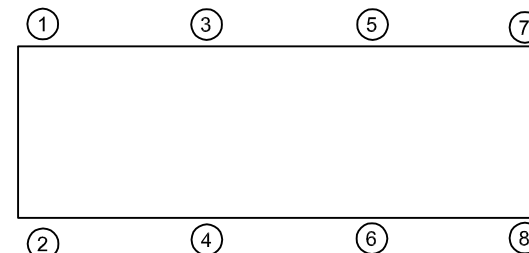
1. ALL DIMENSIONS ARE IN INCHES, INTERPRET PER ANSI Y14.
2. FINISH: HOUSINGS CAST IRON- ONE COAT BLACK PAINT, SPRINGS-POWER COAT, HARDWARE- ZINC ELECTROPLATE.
3. REFER TO SHEET 2 OF 2 FOR INSTALLATION INSTRUCTIONS.
4. INNER SPRING (WHEN USED) NOT SHOWN.
5. MOST SPRINGS ARE DESIGNED WITH 50% OVER TRAVEL.
6. RATED DEFLECTIONS ARE WITHIN 25% OF NOMINAL. HIGHER DEFLECTIONS ARE ALLOWED IF THEY MEET SPECIFICATIONS.

TYPE DP-2F SPRING-FLEX ISOLATORS WITH POSITIONING PIN

MODEL	RATED LOAD (LBS)	RATED DEFLECTION	SPRING RATE (LB/IN)	SPRING COLOR CODE
DP-2F-150	150	2.00	75	BLUE
DP-2F-276	276	2.00	138	BLACK
DP-2F-426N ¹	426	2.00	213	BLACK/BLUE
DP-2F-500	500	2.00	250	RED
DP-2F-650N ¹	650	2.00	325	RED/BLUE
DP-2F-776N ¹	776	2.00	388	RED/BLACK
DP-2F-1000	1000	2.00	500	GREEN
DP-2F-1276N ¹	1276	2.00	638	GREEN/BLACK
DP-2F-1400	1400	2.00	700	GRAY
DP-2F-1675N ¹	1675	2.00	838	GRAY/BLACK
DP-2F-1900N ¹	1900	2.00	950	GRAY/RED
DP-2F-2200N ¹	2200	2.00	1100	GREY/GREEN

NOTES:

1. TWO NESTED SPRINGS YIELD THIS LOAD. THE COLOR CODE INDICATED IS FOR OUTER SPRING/ INNER SPRING.



ISOLATOR SELECTIONS

LOC 1:	LOC 2:
LOC 3:	LOC 4:
LOC 5:	LOC 6:
LOC 7:	LOC 8:
CUSTOMER EQ'PT. TAG:	

NOTE: MATERIAL SHOWN IS FOR (1) SET.

OTHER MATERIALS, COMPOUNDS, OR FINISHES WITH EQUAL OR SUPERIOR PROPERTIES MAY BE SUBSTITUTED AS THEY BECOME AVAILABLE.

CERTIFIED FOR:

JOB NAME: _____

CUSTOMER: _____

CUSTOMER P.O.: _____

SALES ORDER: _____

MODEL DP-2F 150-2200 LBS. OPEN
SPRING-FLEX ISOLATORS SNUBBED WITH
POSITIONING PIN
2 INCH DEFLECTION



THE VMC GROUP
The Power of Together
Bloomington, NJ 07403
Houston, TX 77041

SCALE:

NONE

SHEET:

1 OF 2

DRAWING NO.:

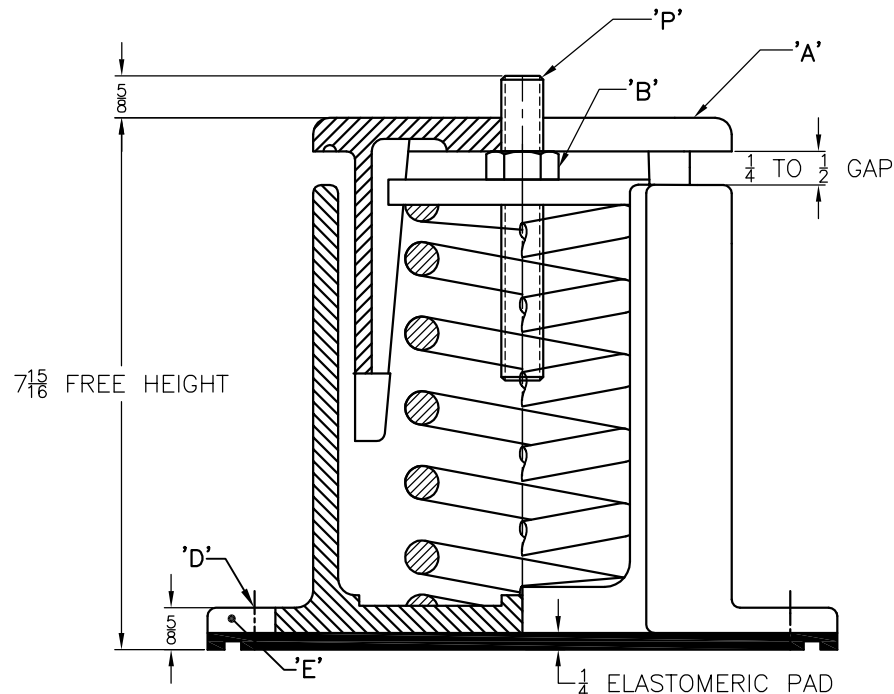
REVISION



REV.	DESCRIPTION	DATE	BY

INSTALLATION INSTRUCTION

- ISOLATORS ARE SHIPPED FULLY ASSEMBLED AND ARE TO BE SPACED AND ARRANGED IN ACCORDANCE WITH INSTALLATION DRAWINGS OR AS OTHERWISE RECOMMENDED.
- SET ISOLATORS ON FLOOR OR SUB-BASE, ENSURING THAT ALL ISOLATOR CENTERLINES MATCH THE EQUIPMENT MOUNTING HOLES. SHIM OR GROUT AS REQUIRED LEVELING ALL ISOLATOR BASE PLATES "E" AT THE SAME ELEVATION (1/4" MAXIMUM DIFFERENCE IN ELEVATION CAN BE TOLERATED). ISOLATOR BASE PLATES MUST REST ON A FLAT SURFACE.
- UNLESS SPECIFIED, MOUNTINGS NEED NOT BE FASTENED TO FLOOR IN ANY WAY. IF REQUIRED, BOLT MOUNTINGS TO THE FLOOR THROUGH SLOTS "D".
- PLACE MACHINE OR EQUIPMENT ONTO TOP PLATE "A" OF ISOLATOR, ENSURING THAT THE PIN "P" IS INSERTED INTO THE EQUIPMENT ONTO TOP PLATE "A" OF ISOLATOR, THE WEIGHT OF THE MACHINE WILL CAUSE THE UPPER HOUSING OF THE MOUNT TO GO DOWN, POSSIBLY RESTING ON THE LOWER HOUSING.
- ADJUSTING EACH ISOLATOR IN SEQUENCE: SCREW DOWN ONE COMPLETE TURN ON THE ADJUSTING BOLT (B) OF EACH MOUNTING. ADJUST UNTIL 1/4" GAP IS OBTAINED ON ALL MOUNTS.
- INSTALLATION COMPLETE.



OTHER MATERIALS, COMPOUNDS, OR FINISHES WITH EQUAL OR SUPERIOR PROPERTIES MAY BE SUBSTITUTED AS THEY BECOME AVAILABLE.

CERTIFIED FOR:

JOB NAME: _____

CUSTOMER: _____

CUSTOMER P.O.: _____

SALES ORDER: _____

MODEL DP-2F 150-2200 LBS. OPEN
SPRING-FLEX ISOLATORS SNUBBED WITH
POSITIONING PIN
2 INCH DEFLECTION



THE VMC GROUP
The Power of Together
Bloomington, NJ 07403
Houston, TX 77041

SCALE:

NONE

SHEET:

2 OF 2

DRAWING NO.:

REVISION

