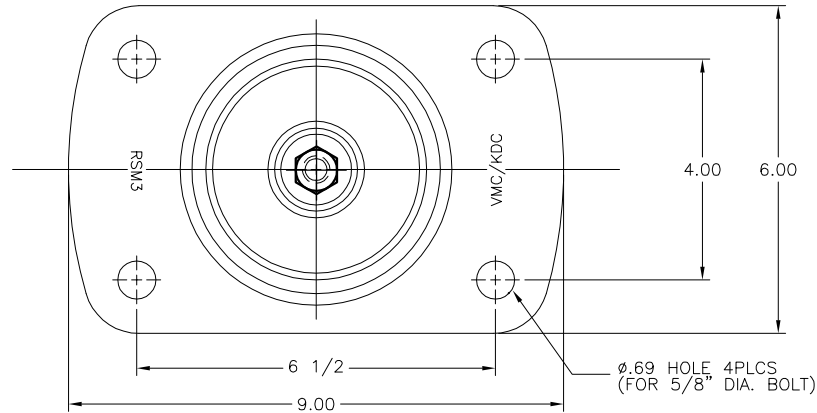
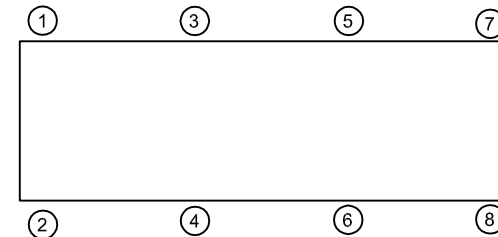
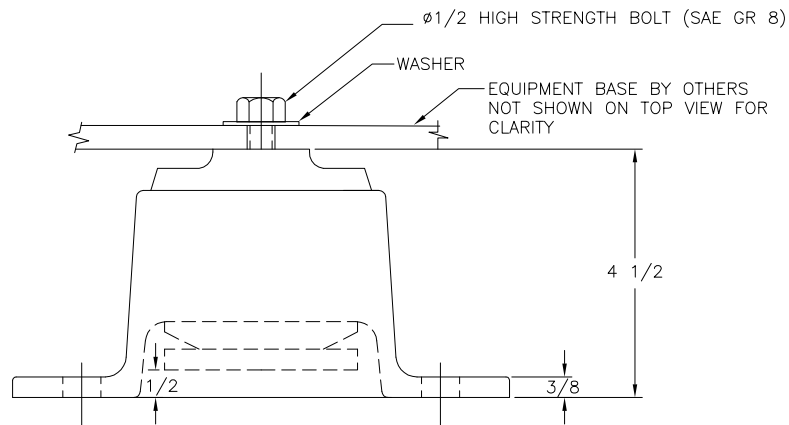


107R-103422 REV.: 2

REV.	DESCRIPTION	DATE	BY



PART NUMBER	MODEL DESIGNATION	LOAD RANGE (LBS)	DEFLECTION LOAD (IN.)	MAX AXIAL DEFLECTION (IN.)
770067-1	RSM3-400	250-400	0.15	0.50
770067-2	RSM3-700	400-700	0.15	0.50
770067-3	RSM3-1000	700-1000	0.15	0.50
770067-4	RSM3-1300	1000-1300	0.15	0.50
770067-5	RSM3-1600	1300-1600	0.15	0.50
770067-6	RSM3-2300	1600-2300	0.15	0.50



## NOTES:

- ALL DIMENSIONS ARE IN INCHES. INTERPRET PER ANSI Y14.
- FINISH:
  - A. CASTING; STANDARD PAINT (BLACK)
  - OPTIONAL:
    - GALVANIZED.
    - POWDER COATED (CASTING). CONTACT VMC FOR AVAILABILITY OF ADDITIONAL FINISHES.
  - B. HARDWARE; ELECTRO-ZINC PLATED.
- APPROX. WEIGHT; 14.8 LBS.

## ISOLATOR SELECTIONS

LOC 1:	LOC 2:
LOC 3:	LOC 4:
LOC 5:	LOC 6:
LOC 7:	LOC 8:
CUSTOMER EQP'T. TAG:	

NOTE: MATERIAL SHOWN IS FOR (1) SET.

OTHER MATERIALS, COMPOUNDS, OR FINISHES WITH EQUAL OR SUPERIOR PROPERTIES MAY BE SUBSTITUTED AS THEY BECOME AVAILABLE.

## CERTIFIED FOR:

JOB NAME: \_\_\_\_\_

CUSTOMER : \_\_\_\_\_

CUSTOMER P.O.: \_\_\_\_\_

SALES ORDER: \_\_\_\_\_

## MODEL RSM3 250-2300 LBS. RESTRAINED ELASTOMERIC ISOLATOR



**THE VMC GROUP**  
*The Power of Together*  
 Bloomingdale, NJ 07403  
 Houston, TX 77041

SCALE :

NONE

SHEET:



DRAWING NO.:

REVISION