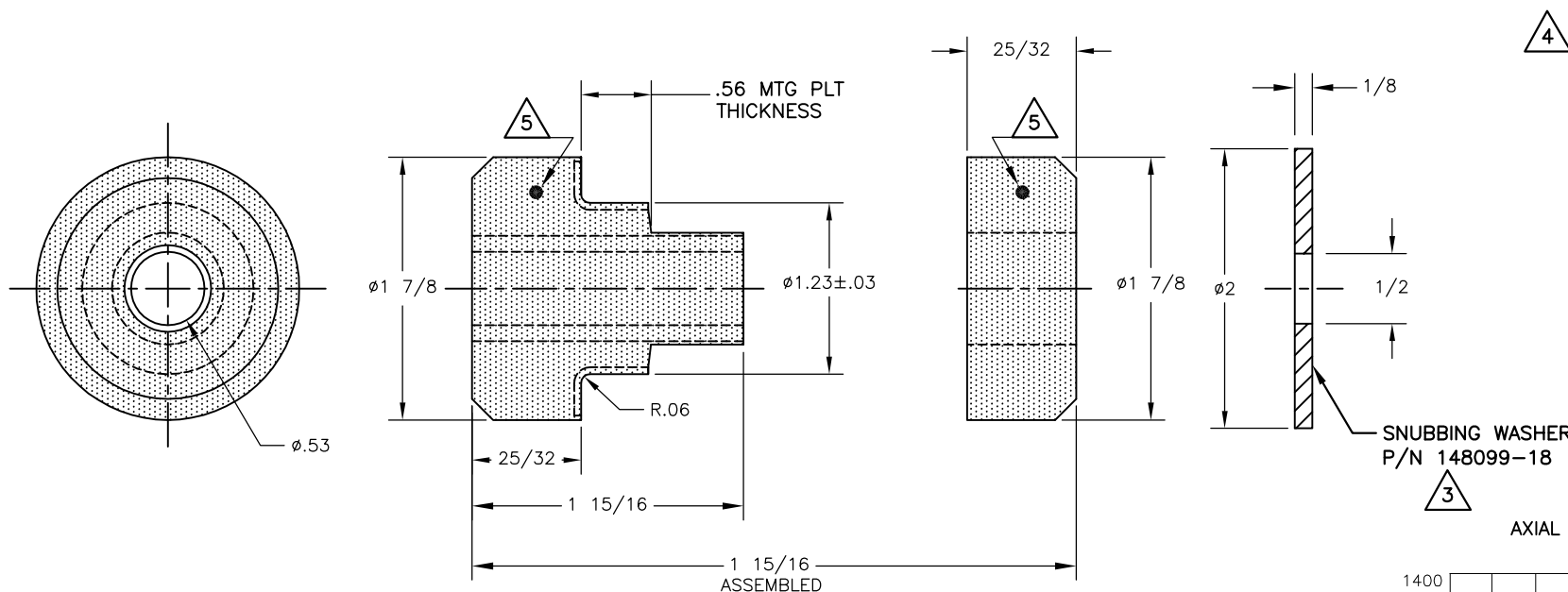


TYPE RBS2 ELASTOMERIC RING & BUSHING BRIDGE BEARING NEOPRENE

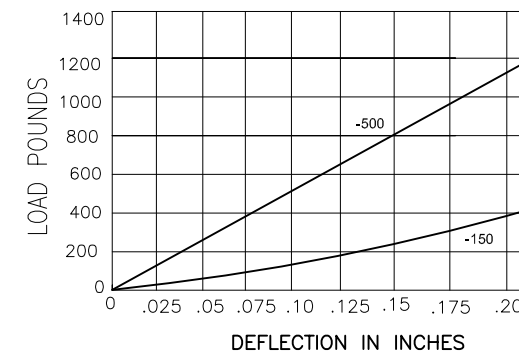
PART NO.	MODEL NO.	AXIAL STATIC LOAD MAX LBS.	RADIAL STATIC LOAD MAX LBS.	DUROMETER	COLOR CODE	MATERIAL
770110-1	RBS2-01	500	200	70	PURPLE/GRN	BR BRG NEO
770110-30	RBS2-30	$\triangle 6$	$\triangle 6$	30	BLACK	BR BRG NEO



NOTES:

- ALL DIMENSIONS ARE IN INCHES .INTERPRET PER ANSI Y14
- ALL DIMENSIONS ARE NOMINAL AND FOR REFERENCE ONLY .
- SNUBBING WASHER IS OPTIONAL, ORDER SEPERATE ON PURCHASE ORDER .
FINISH :YELLOW ZINC PLATED PER ASTM B633 TYPE II, CLASS SC 3 UNLESS OTHERWISE SPECIFIED .
- COLOR-CODE "MARK "IS AN ACCEPTABLE ADDITION TO MODEL STAMPING .
- STAMPING SURFACE LOCATION AS MARKED ON DRAWING .
- CURRENTLY UNDER ENGINEERING REVIEW CONTACT VMC FOR AVAILABILITY

AXIAL LOAD Vs. DEFLECTION



OTHER MATERIALS, COMPOUNDS, OR FINISHES WITH EQUAL OR SUPERIOR PROPERTIES MAY BE SUBSTITUTED AS THEY BECOME AVAILABLE.

CERTIFIED FOR:

JOB NAME: _____

CUSTOMER : _____

CUSTOMER P.O.: _____

SALES ORDER: _____

MODEL RBS2 500 LBS.
RING AND BUSHING
BRIDGE BEARING
ELASTOMERIC ISOLATOR
WITH WEAR PLATE



THE VMC GROUP
The Power of Together
Bloomington, NJ 07403
Houston, TX 77041

SCALE :

NONE

SHEET:

1 OF 1

DRAWING NO.:

REVISION

Member
VISCMA