

Type WZV

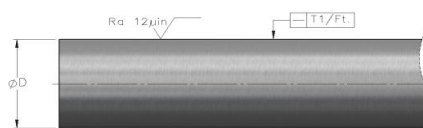
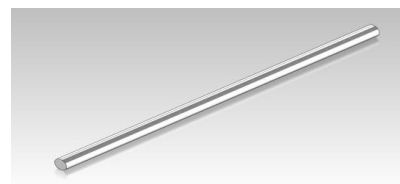
inch

Precision Shaft

Type WZV

Style: Precision hardened and ground, carbon steel w/ hard chrome plating

Material: Cf53, Ck55



Dia [in]	Type	Weight [lb/ft]	Length [in]	Tolerance class "L" [in]	Hardness Depth min [in]	Straightness T ₁ [in/ft]	Roundness [in]
1/4	WZV 4	0.17	236	.2495/.2490	0.016	0.0024	0.000157
3/8	WZV 6	0.38	236	.3745/.3740	0.016	0.0024	0.000157
1/2	WZV 8	0.66	236	.4995/.4990	0.024	0.0012	0.000197
5/8	WZV 10	1.04	236	.6245/.6240	0.024	0.0012	0.000197
3/4	WZV 12	1.5	236	.7495/.7490	0.035	0.0012	0.000236
1	WZV 16	2.66	236	.9995/.9990	0.035	0.0012	0.000236
1-1/4	WZV 20	4.17	236	1.2495/1.2490	0.059	0.0012	0.000276
1-1/2	WZV 24	6	236	1.4994/1.4989	0.059	0.0012	0.000276
2	WZV 32	10.67	236	1.9994/1.9987	0.059	0.0012	0.000276

Chrome layer thickness: 10 ± 5µm

Chrome layer hardness: ≥ 800 HV

Surface hardness: 59-65 HRC

Length tolerance: +500 / -100 mm

Special tolerances and diameters are available upon request

Custom machining per customer drawing