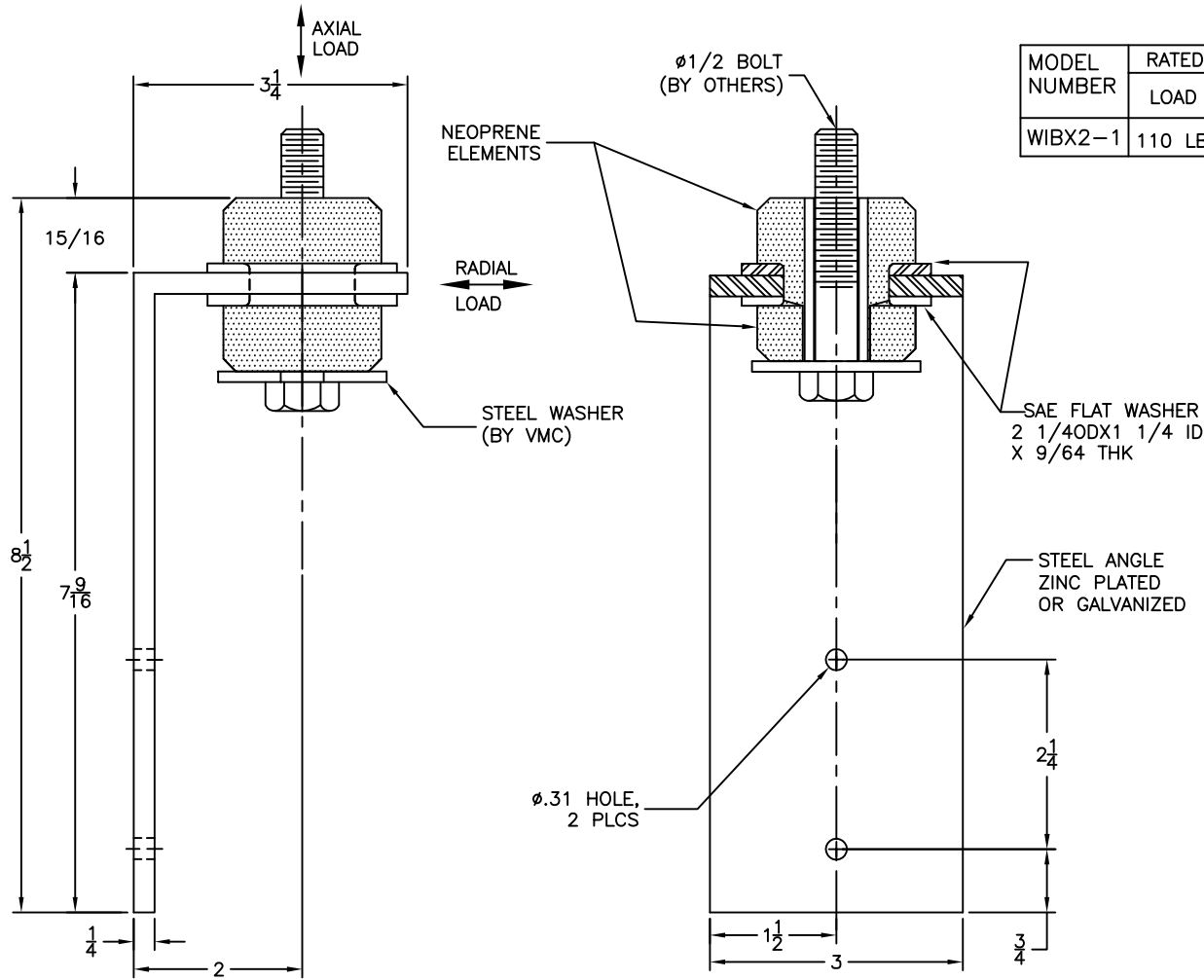


REV.	DESCRIPTION	DATE	BY



MODEL NUMBER	RATED AXIAL LOAD VS. DEFLECTION				MAXIMUM ASSIGNED WALL WEIGHT	MAXIMUM RADIAL LOAD
	LOAD	DEFL.	LOAD	DEFL.		
WIBX2-1	110 LBS	.05 IN.	180 LBS	.10 IN.	350 LBS	120 LBS

NOTES:

1. WALL MUST BE SUPPORTED AT THE BASE.
2. NOMINAL "STATIC" LOAD IS ZERO. MAXIMUM ASSIGNED WALL WEIGHT IS INTENDED TO ALLOW FOR POTENTIAL BUCKLING OR EXPANSION FORCES.
3. NEOPRENE ELEMENT AND WASHER ARE SHIPPED TIE WIRED TO BRACKET.

OTHER MATERIALS, COMPOUNDS, OR FINISHES WITH EQUAL OR SUPERIOR PROPERTIES MAY BE SUBSTITUTED AS THEY BECOME AVAILABLE.

**CERTIFIED FOR:**

JOB NAME: \_\_\_\_\_  
 CUSTOMER : \_\_\_\_\_  
 CUSTOMER P.O.: \_\_\_\_\_  
 SALES ORDER: \_\_\_\_\_

**MODEL WIBX2 110-180 LBS. ELASTOMERIC WALL ISOLATION BRACE**



**THE VMC GROUP**  
*The Power of Together*  
 Bloomingdale, NJ 07403  
 Houston, TX 77041

SCALE:

NONE

SHEET:



DRAWING NO.:

REVISION