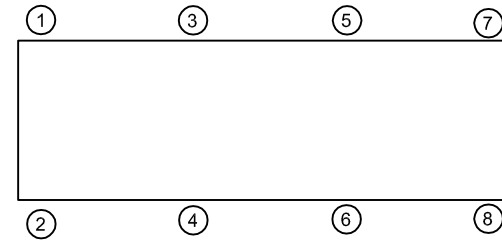
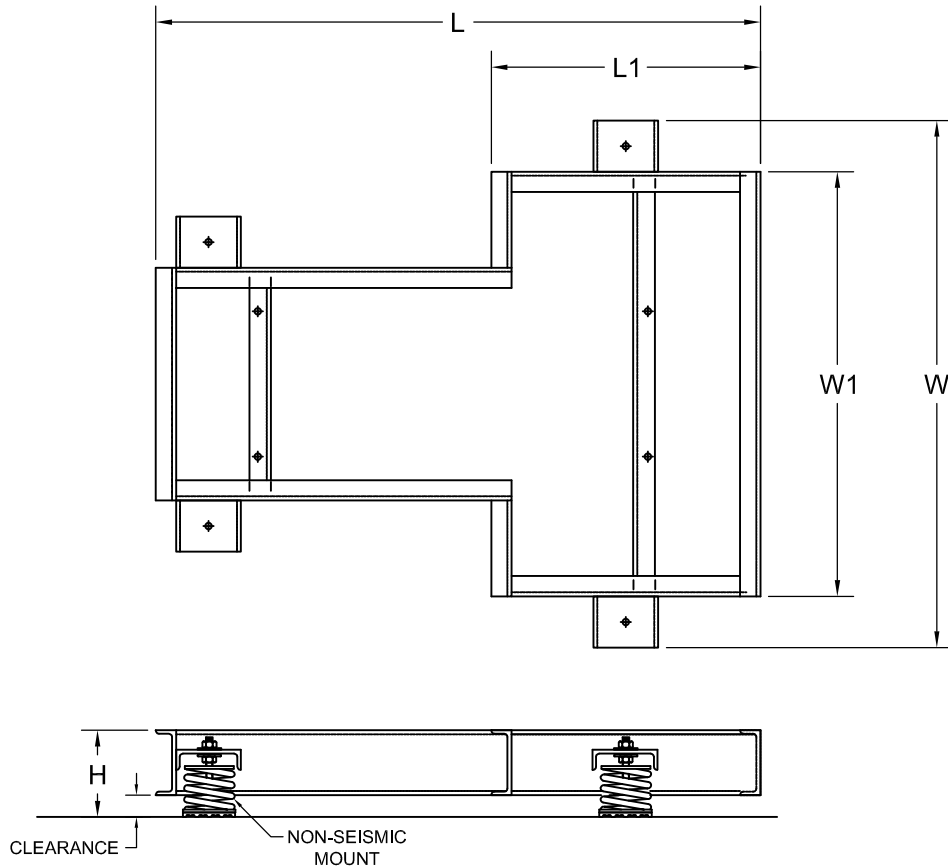


REV.	DESCRIPTION	DATE	BY



**NOTES**

1. BASE HEIGHT VARIES BASED ON MOUNT OR FRAME CONSTRUCTION.
2. CLEARANCE BELOW BASE VARIES PER CONSTRUCTION REQUIREMENT.
3. LENGTH AND WIDTH VARIES PER APPLICATION DEMANDS OR PRODUCT CONSTRUCTION.
4. METHOD OF FRAME OR BASE ATTACHMENT TO ISOLATORS MAY VARY PER FRAME OR MOUNT REQUIREMENTS.
5. MOUNT ILLUSTRATION MAY VARY PER APPLICATION OR PROJECT REQUIREMENTS.
6. ANCHORING OR BOLT DOWN REQUIREMENTS VARY PER MOUNT OR PROJECT REQUIREMENTS.
7. INSTALLATION INSTRUCTIONS VARY PER MOUNT OR PROJECT REQUIREMENTS, CONTACT VMC FOR AVAILABILITY
8. RATED DEFLECTIONS ARE WITHIN 25% OF NOMINAL. HIGHER DEFLECTIONS AVAILABLE CONTACT VMC FOR AVAILABILITY.

**ISOLATOR SELECTIONS**

LOC 1:	LOC 2:
LOC 3:	LOC 4:
LOC 5:	LOC 6:
LOC 7:	LOC 8:
CUSTOMER EQP'T. TAG:	

NOTE: MATERIAL SHOWN IS FOR (1) SET.

OTHER MATERIALS, COMPOUNDS, OR FINISHES WITH EQUAL OR SUPERIOR PROPERTIES MAY BE SUBSTITUTED AS THEY BECOME AVAILABLE.

**CERTIFIED FOR:**

JOB NAME: \_\_\_\_\_  
 CUSTOMER : \_\_\_\_\_  
 CUSTOMER P.O.: \_\_\_\_\_  
 SALES ORDER: \_\_\_\_\_

**MODEL SFB INTEGRAL STEEL  
 FAN AND MOTOR BASE  
 2 INCH DEFLECTION WITH  
 NON-SEISMIC ISOLATOR**



**THE VMC GROUP**  
*The Power of Together*  
 Bloomingdale, NJ 07403  
 Houston, TX 77041

SCALE :

NONE

SHEET:



DRAWING NO.:

REVISION