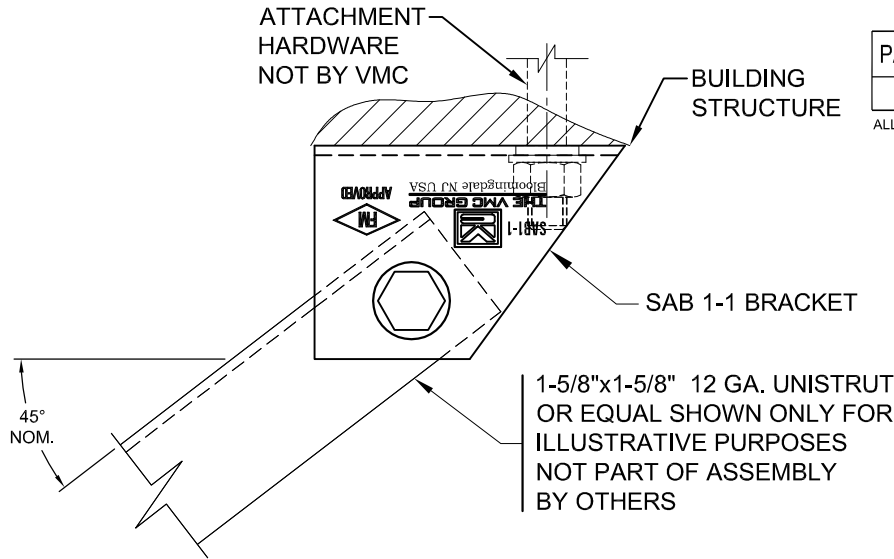
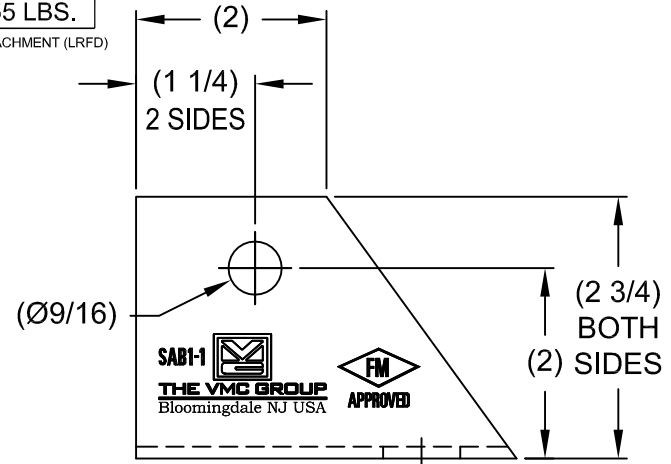


REV.	DESCRIPTION	DATE	BY

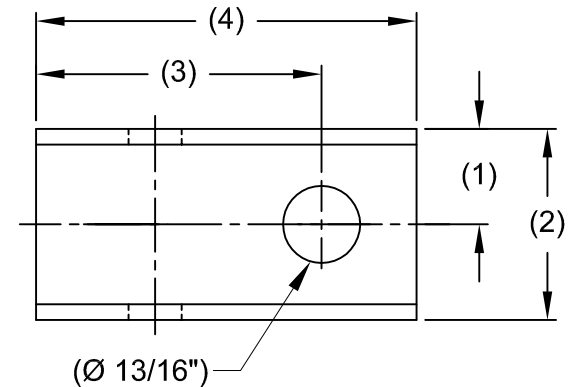
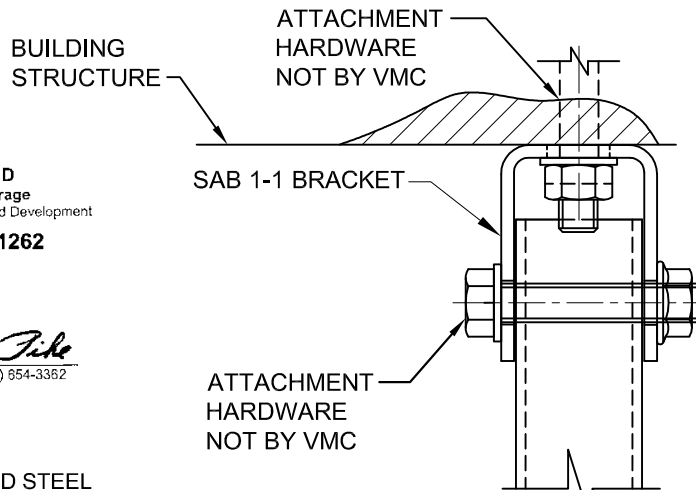


PART NUMBER	MAX. TENSION ALLOWABLE
590007-1	7255 LBS.

ALL RATING AT 45° FOR STEEL ATTACHMENT (LRFD)



SIDE VIEW



TOP VIEW

OTHER MATERIALS, COMPOUNDS, OR FINISHES WITH EQUAL OR SUPERIOR PROPERTIES MAY BE SUBSTITUTED AS THEY BECOME AVAILABLE.

APPROVED
Fixed Equipment Anchorage
Office of Statewide Health Planning and Development
OPA-1262
on
Anthony R. Pike
Anthony R. Pike (918) 854-3362

NOTES:

- 1) MATERIAL: COLD ROLLED STEEL
- 2) ALL DIMENSIONS IN () ARE FOR REFERENCE ONLY.
- 3) ALLOWABLE ANCHORAGE TO CONCRETE TO BE CALCULATED ON A JOB BASIS.
- 4) STRUT LENGTH LIMITATION DUE TO BUCKING.

CERTIFIED FOR:

JOB NAME: _____
CUSTOMER : _____
CUSTOMER P.O.: _____
SALES ORDER: _____

**MODEL SAB1 7255 LBS. SEISMIC BRACKET
RESTRAINT FOR UNISTRUT**



THE VMC GROUP
The Power of Together
Bloomingdale, NJ 07403
Houston, TX 77041

SCALE :

NONE

SHEET:



DRAWING NO.:

REVISION