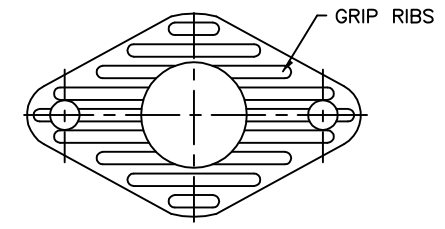
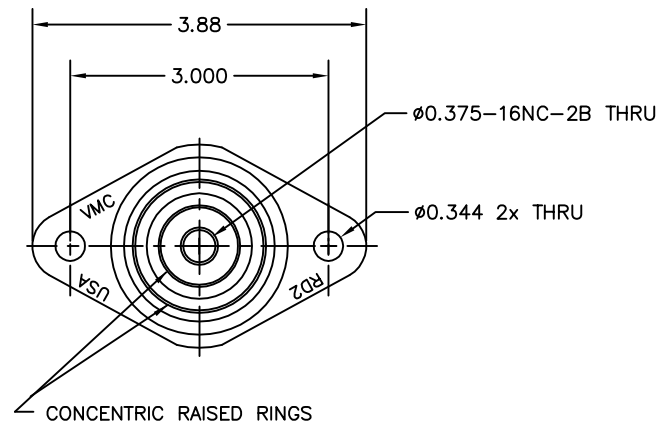


114R-100318 REV.: 2

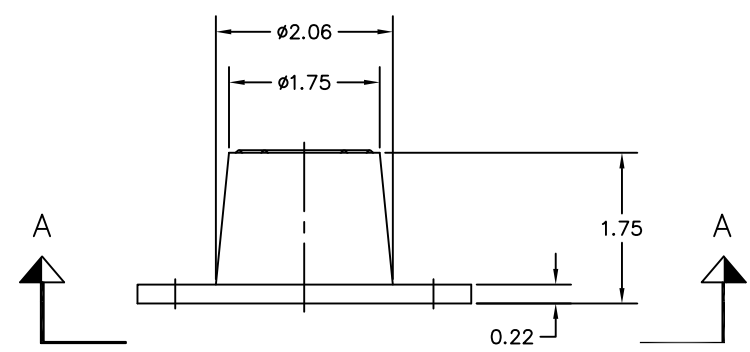
REV.	DESCRIPTION	DATE	BY



VIEW "A-A"

TABLE 1

PART NUMBER	MODEL	RATED AXIAL LOAD-LBS	DEFLECTION AT RATED LOAD-INCHES
114A-100317-01	RD2-BLUE-WR	135	0.50
114A-100317-02	RD2-BROWN-WR	170	0.50
114A-100317-03	RD2-RED-WR	240	0.50
114A-100317-04	RD2-GREEN-WR	380	0.50
114A-100317-05	RD2-GRAY-WR	790	0.50
114A-100317-06	RD2-PURPLE-WR	⚠	0.50





AXIAL TO RADIAL SPRING RATE (K) RATIO 3:1 NOMINAL

NOTES:

1. DIMENSIONS FOR CUSTOMER REFERENCE
2. TABLE 1 IS AVERAGE DESIGN DATA FOR REFERENCE.
3. MOLDED STEEL AND ELASTOMER MOUNT FOR NON-FAIL SAFE, OUTDOOR SERVICE CONDITIONS.
4. CONSULT VMC FOR APPLICABILITY
- ⚠ CONTACT VMC FOR APPLICABLE RATED LOAD.

OTHER MATERIALS, COMPOUNDS, OR FINISHES WITH EQUAL OR SUPERIOR PROPERTIES MAY BE SUBSTITUTED AS THEY BECOME AVAILABLE.

CERTIFIED FOR: JOB NAME: _____ CUSTOMER : _____ CUSTOMER P.O.: _____ SALES ORDER: _____	MODEL RD2 135-790 LBS. DURULENE ELASTOMERIC ISOLATOR 0.5 INCH DEFLECTION	 THE VMC GROUP <i>The Power of Together</i> Bloomingdale, NJ 07403 Houston, TX 77041	SCALE : NONE	
			SHEET:	
			DRAWING NO.:	REVISION