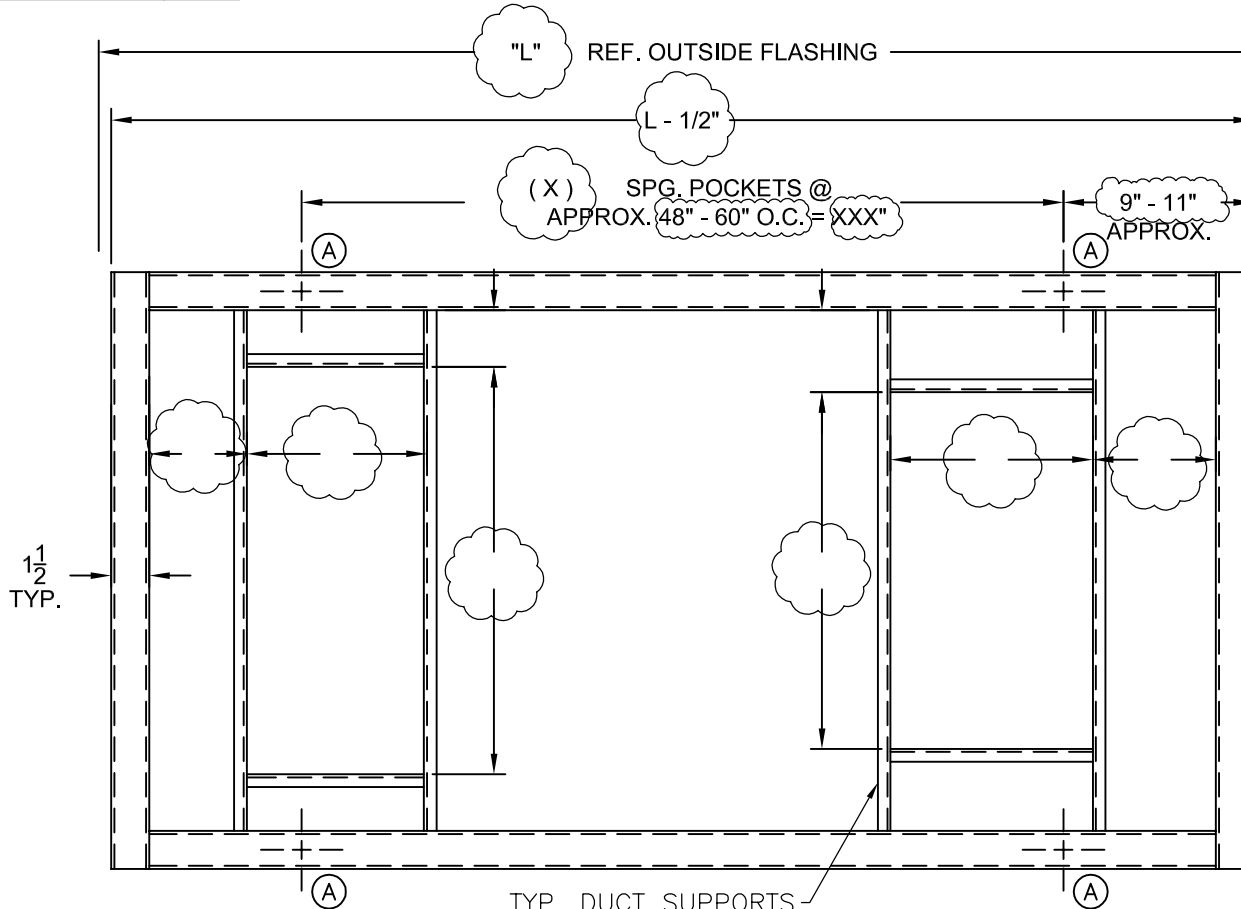


REV.	DESCRIPTION	DATE	BY



CURB DATA

TOTAL CURB WEIGHT: 16 LB/FT
 QUANTITY: _____
 SHIPPED IN 1 SECTION(S)
 LOWER RAIL O.A. DIMENSIONS: (L+2) x (W+2)
 CURB HEIGHT: 22"
 CURB LINEAL FOOTAGE: (Lx2)+(Wx2)

SPRING POCKET LOCATION	SPRING IDENT. NO.	MAX. RATED LOAD PER POCKET	MAX. DEFL. (IN.)
A	T3Q-	XXX#	3.0

TYP. DUCT SUPPORTS AS REQUIRED (FLUSH TO TOP OR DROP "Y" INCHES)

OPTIONS

YES NO

SEISMIC/WIND CONSIDERATION

SOUND BARRIER PKG.

CONDENSING UNIT RAIL PER DWG. NO. _____

DUCT SUPPORT PKG.

TAG: _____

MANUFACTURER: _____

MODEL NUMBER: _____

OPERATING WEIGHT: _____

NOTE: ENGINEER REQUIRED TO FILL IN ALL VARIABLES PRIOR TO SUBMISSION. IF ANY VARIABLES ARE MISSING, MARK DWG AS "PRELIMINARY" AND SUBMIT. REMOVE BALLOONS AND THIS NOTE.

- NOTES:**
1. ROOFING AND INSULATION TO BE SUPPLIED BY OTHERS.
 2. OUTSIDE FLASHING DIMENSIONS OF CURB MATCH UNIT MANUFACTURERS CURB.
 3. SEE BULLETIN RC98 FOR TYPICAL INSTALLATION DETAILS AND ADJUSTMENT INSTRUCTIONS.
 4. FOR MANUFACTURING DETAILS, REFERENCE SUBSEQUENT DRAWING SHEETS.

OTHER MATERIALS, COMPOUNDS, OR FINISHES WITH EQUAL OR SUPERIOR PROPERTIES MAY BE SUBSTITUTED AS THEY BECOME AVAILABLE.

CERTIFIED FOR:

JOB NAME: _____

CUSTOMER : _____

CUSTOMER P.O.: _____

SALES ORDER: _____

MODEL P 6300 ISOLATED SEISMIC WIND RESTRAINT ROOF CURB



THE VMC GROUP
 The Power of Together
 Bloomingdale, NJ 07403
 Houston, TX 77041

SCALE: NONE

SHEET: _____

DRAWING NO.: VMA- _____

REVISION _____

