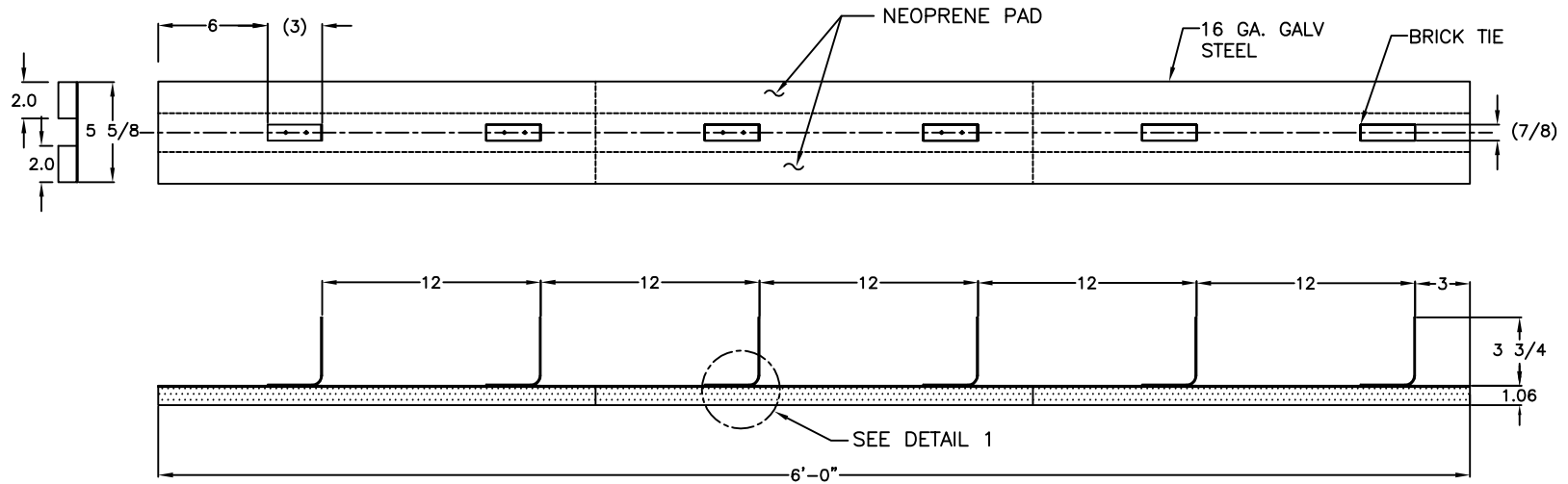


204R-103369 REV.: 3

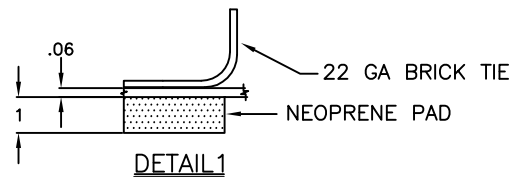
REV.	DESCRIPTION	DATE	BY

MODEL NO.	UNIFORM LOAD	DEFL. AT MAX. LOAD	VERT. DYNAMIC FREQ. AT MAX. LOAD
MWIP2	13000 LBS	.10 in	12 HZ



NOTES:

1. ALL DIMENSIONS IN INCHES. INTERPRET PER ANSI Y14.
2. MATERIALS: ELASTOMER-BRIDGE BEARING NEOPRENE SHEET METAL AND BRICK TIES-GALVANIZED STEEL
3. FOR LIGHTER LOADS, STIFFNESS AND DYNAMIC FREQUENCY CAN BE VARIED BY CHANGING SIZE AND LOCATION OF NEOPRENE PADS.



OTHER MATERIALS, COMPOUNDS, OR FINISHES WITH EQUAL OR SUPERIOR PROPERTIES MAY BE SUBSTITUTED AS THEY BECOME AVAILABLE.

**CERTIFIED FOR:**

JOB NAME: \_\_\_\_\_  
 CUSTOMER : \_\_\_\_\_  
 CUSTOMER P.O.: \_\_\_\_\_  
 SALES ORDER: \_\_\_\_\_

**MODEL MWIP2 13000 LBS. MASONRY WALL ISOLATION PAD**



**THE VMC GROUP**  
*The Power of Together*  
 Bloomingdale, NJ 07403  
 Houston, TX 77041

SCALE :

NONE

SHEET:



DRAWING NO.:

REVISION