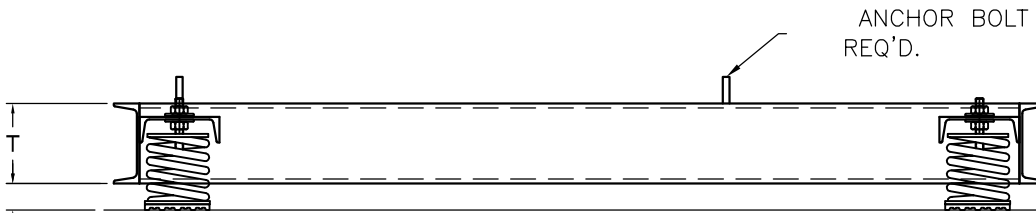
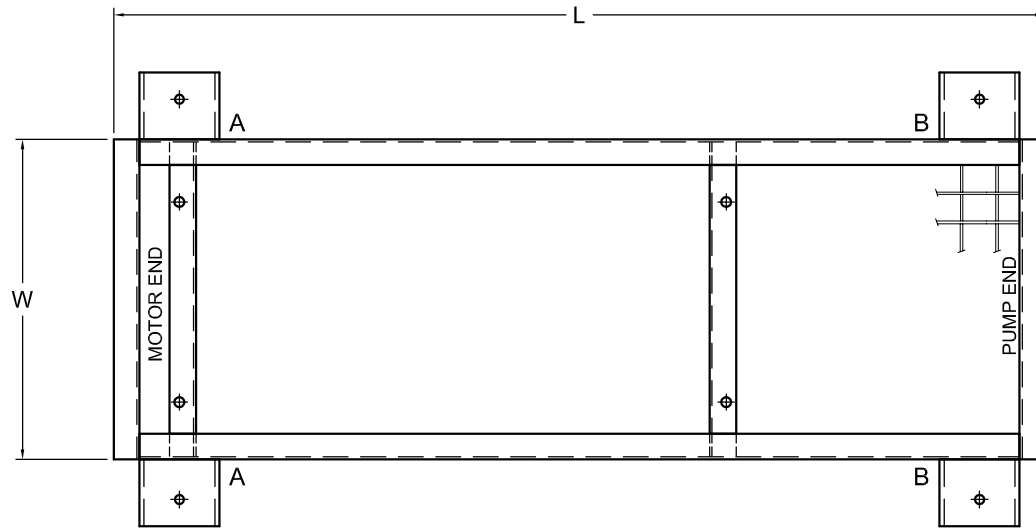


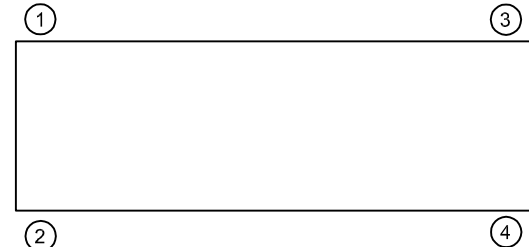
REV.	DESCRIPTION	DATE	BY



TAG:
 NOTE: () BASE(S) REQUIRED.
 ALL DIMENSIONS IN INCHES.
 CONCRETE WEIGHT _____
 BASE SHIPPING WEIGHT _____

CLEARANCE

- NOTES:**
- HEIGHT OF PRODUCT VARIES PER MOUNT.
 - CLEARANCE UNDERNEATH THE UNIT VARIES PER FRAME CONSTRUCTION.
 - LENGTH AND WIDTH VARIES PER APPLICATION DEMANDS OR PRODUCT CONSTRUCTION.
 - METHOD OF FRAME OR BASE ATTACHMENT TO ISOLATORS MAY VARY PER FRAME OR MOUNT.
 - MOUNT ILLUSTRATION MAY VARY PER APPLICATION OR PROJECT REQUIREMENTS.
 - ANCHORING OR BOLT DOWN REQUIREMENTS VARY PER MOUNT OR PROJECT REQUIREMENTS.
 - INSTALLATION INSTRUCTIONS VARY PER MOUNT OR PROJECT REQUIREMENTS; CONTACT MANUFACTURER FOR INSTALLATION INSTRUCTIONS.
 - STEEL FRAMING, REBAR, TEMPLATES, BRACKETS, ISOLATORS BY VMC. INSTALLATION BY OTHERS.
 - CUSTOM CUT LENGTH AND WIDTH AVAILABLE; CONTACT VMC FOR AVAILABILITY.
 - RATED DEFLECTIONS ARE WITHIN 25% OF NOMINAL. HIGHER DEFLECTIONS ARE ALLOWED IF THEY MEET SPECIFICATIONS.



ISOLATOR SELECTIONS	
LOC 1:	LOC 2:
LOC 3:	LOC 4:
CUSTOMER EQP'T. TAG:	

NOTE: MATERIAL SHOWN IS FOR (1) SET.

OTHER MATERIALS, COMPOUNDS, OR FINISHES WITH EQUAL OR SUPERIOR PROPERTIES MAY BE SUBSTITUTED AS THEY BECOME AVAILABLE.

CERTIFIED FOR:

JOB NAME: _____

CUSTOMER: _____

CUSTOMER P.O.: _____

SALES ORDER: _____

**MODEL CPF NON SEISMIC INERTIA BASE
 PUMP 2 INCH DEFLECTION**



THE VMC GROUP
The Power of Together
 Bloomingdale, NJ 07403
 Houston, TX 77041

SCALE: **NONE**

SHEET: _____

DRAWING NO.: _____

REVISION: _____

Member VISCMA