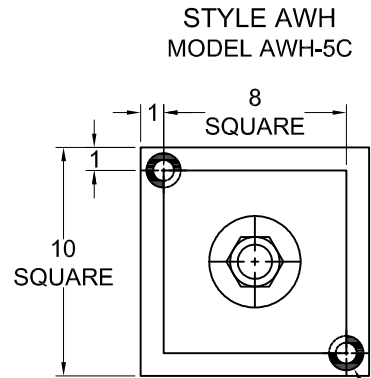
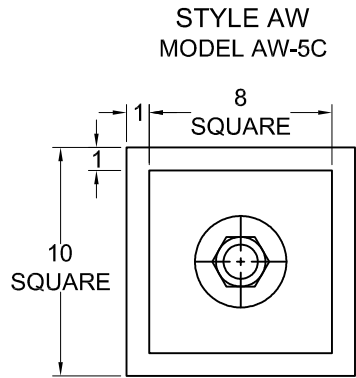


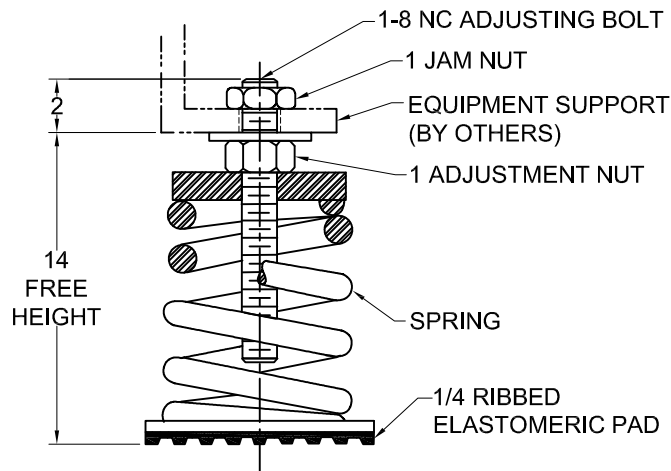
REV.	DESCRIPTION	DATE	BY



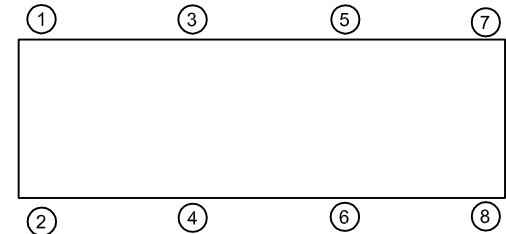
ELASTOMERIC GROMMET FOR 1/2 ANCHOR BOLTS (2 TYP)

MODELS AW & AWH-5C SPRING-FLEX ISOLATORS				
MODEL	MAX LOAD <sup>2</sup> (LBS)	DEFLECTION (IN)	SPRING RATE (LB/IN)	SPRING COLOR CODE
AW*-5C-250 <sup>1</sup>	250	5.00	50	BLACK
AW*-5C-550 <sup>1</sup>	550	5.50	100	LT IVORY
AW*-5C-895 <sup>1</sup>	895	5.36	167	DK YELLOW
AW*-5C-1280 <sup>1</sup>	1280	5.12	250	BLUE
AW*-5C-1835 <sup>1</sup>	1835	4.40	417	RED
AW*-5C-2300 <sup>1</sup>	2300	4.60	500	GREEN

- NOTES:  
 1. TO COMPLETE MODEL NUMBER, ADD STYLE LETTER (IF USED) IN PLACE OF \*.  
 2. LOAD WILL BE LABELED ON ISOLATOR AND STENCILED ON BASE PLATE.



- NOTES:  
 1. ALL DIMENSIONS ARE IN INCHES, INTERPRET PER ANSI Y-14.  
 2. FINISH: HOUSING- ONE COAT BLACK PAINT, SPRING- BLACK PAINT, HARDWARE- ZINC ELECTROPLATE.  
 3. REFER TO DRAWING 2 OF 2 FOR INSTALLATION INSTRUCTIONS.  
 4. INNER SPRING (WHEN USED) NOT SHOWN.  
 5. ALL SPRINGS DESIGNED WITH 50% OVER-TRAVEL.  
 6. RATED DEFLECTIONS ARE WITHIN 25% OF NOMINAL. HIGHER DEFLECTIONS ARE ALLOWED IF THEY MEET SPECIFICATIONS.



ISOLATOR SELECTIONS	
LOC 1:	LOC 2:
LOC 3:	LOC 4:
LOC 5:	LOC 6:
LOC 7:	LOC 8:
CUSTOMER EQPT. TAG:	

NOTE: MATERIAL SHOWN IS FOR (1) SET.

OTHER MATERIALS, COMPOUNDS, OR FINISHES WITH EQUAL OR SUPERIOR PROPERTIES MAY BE SUBSTITUTED AS THEY BECOME AVAILABLE.

**CERTIFIED FOR:**

JOB NAME: \_\_\_\_\_  
 CUSTOMER: \_\_\_\_\_  
 CUSTOMER P.O.: \_\_\_\_\_  
 SALES ORDER: \_\_\_\_\_

**MODEL AW AND AWH-5C 250-2300 LBS.  
 OPEN SPRING-FLEX ISOLATORS  
 5 INCH DEFLECTION**



**THE VMC GROUP**  
*The Power of Together*  
 Bloomingdale, NJ 07403  
 Houston, TX 77041

SCALE:  
 NONE  
 SHEET:  
 1 OF 2

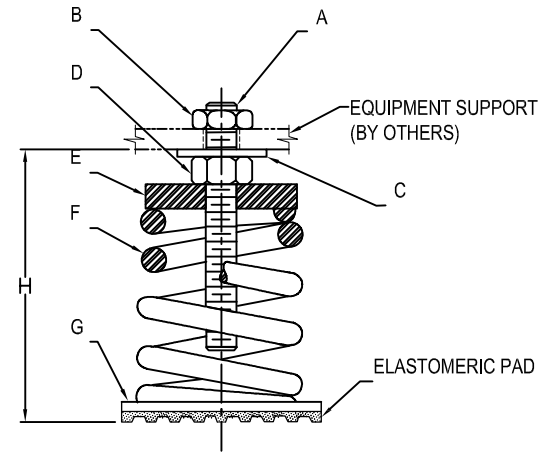


DRAWING NO.: \_\_\_\_\_ REVISION \_\_\_\_\_

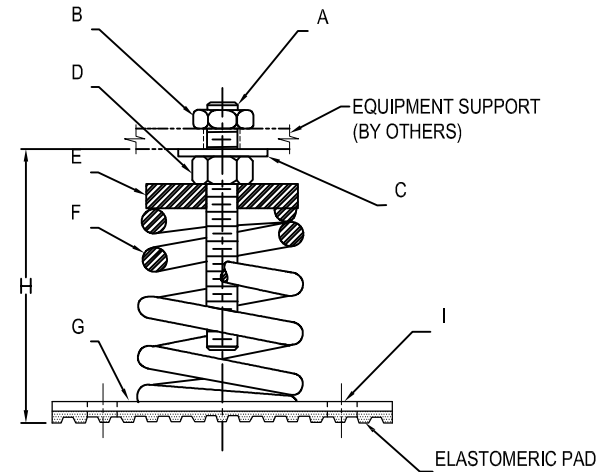
REV.	DESCRIPTION	DATE	BY

### INSTALLATION INSTRUCTION

- ISOLATORS ARE SHIPPED FULLY ASSEMBLED AND ARE TO BE SPACED AND ARRANGED IN ACCORDANCE WITH INSTALLATION DRAWINGS OR AS OTHERWISE RECOMMENDED.
- SET ISOLATORS ON FLOOR OR SUB-BASE, ENSURING THAT ALL ISOLATOR CENTERLINES MATCH THE EQUIPMENT ISOLATING HOLES OR SPACE AND ARRANGE ISOLATORS IN ACCORDANCE WITH THE INSTALLATION DRAWING. SHIM OR GROUT AS REQUIRED LEVELING ALL ISOLATOR BASE PLATES AT THE SAME ELEVATION (1/4" MAXIMUM DIFFERENCE IN ELEVATION CAN BE TOLERATED). ISOLATOR BASE MUST REST ON A FLAT SURFACE.
- DESIGNATION OF ISOLATORS IS SHOWN ON TAG / LABEL ATTACHED TO EACH ISOLATOR OR ISOLATORS MAY BE IDENTIFIED BY SIZE OF BASE PLATE AND / OR SPRING COLOR CODE.
- IF FLOOR FASTENING IS REQUIRED, PLACE ISOLATOR AS INDICATED ON NOTE 1 THRU 3 AND ANCHOR USING (2) ANCHOR THRU HOLES "I" ON STEEL PLATE "G" (APPLIES ONLY TO **STYLE AWH** ISOLATOR).
- REMOVE JAM NUT "B" FROM ADJUSTING BOLT "A", TURN ADJUSTING NUT "D" COUNTER-CLOCKWISE TO SET "H" FOR ALL ISOLATORS.
- POSITION EQUIPMENT OVER THE ISOLATORS, ALIGN ISOLATOR ADJUSTING BOLT "A" TO EQUIPMENT BASE ISOLATING THRU HOLES.
- LOWER EQUIPMENT UNTIL IT REST ON ADJUSTING NUT WASHER "C" (SPRING WILL COMPRESS)
- INSERT JAM NUT "B" ON ADJUSTING BOLT "A".
- LEVEL EQUIPMENT BY TURNING ADJUSTING NUT "D" AS REQUIRED
- TIGHTEN JAM NUT "B". INSTALLATION IS COMPLETE



STYLE - AW



STYLE - AWH

**CERTIFIED FOR:**

JOB NAME: \_\_\_\_\_  
 CUSTOMER: \_\_\_\_\_  
 CUSTOMER P.O.: \_\_\_\_\_  
 SALES ORDER: \_\_\_\_\_

MODEL AW AND AWH-5C 250-2300 LBS.  
 OPEN SPRING-FLEX ISOLATORS  
 5 INCH DEFLECTION



**THE VMC GROUP**  
 The Power of Together  
 Bloomingdale, NJ 07403  
 Houston, TX 77041

SCALE: NONE  
 SHEET: 2 OF 2



DRAWING NO.: \_\_\_\_\_ REVISION \_\_\_\_\_