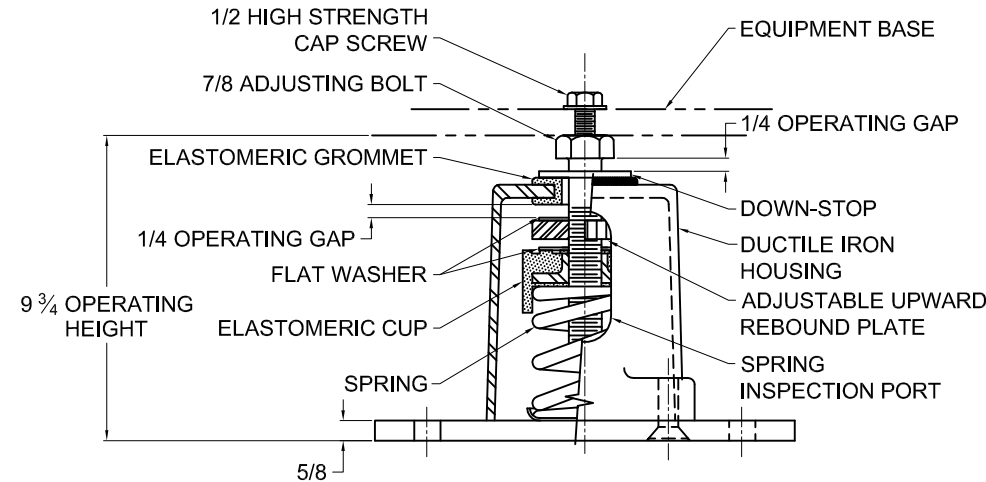
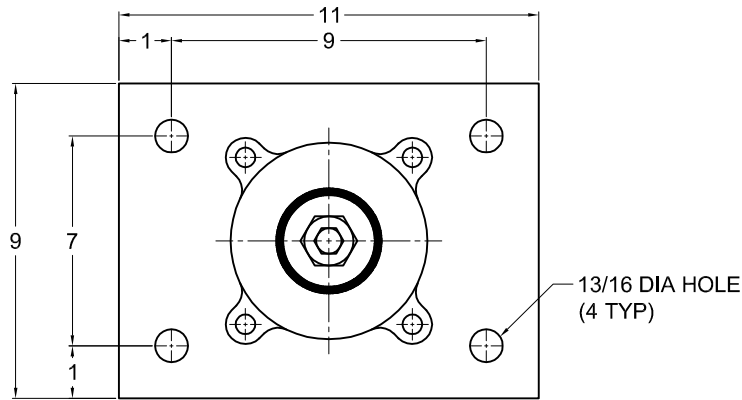


126R-101833 REV.: 7

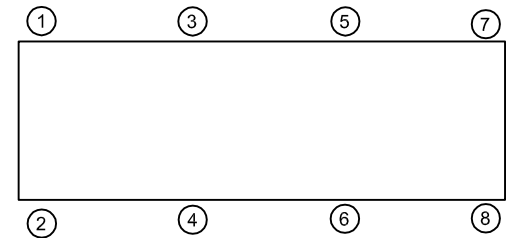
REV.	DESCRIPTION	DATE	BY



TYPE AEQMR-1E SEISMIC ISOLATORS FOR NOMINAL 1" DEFLECTION				
MODEL	RATED LOAD (LBS)	RATED DEFLECTION (IN)	SPRING RATE (LB/IN)	SPRING COLOR CODE
AEQMR-1E-195	195	1.95	100	DK BLUE
AEQMR-1E-400	400	1.32	303	BLACK
AEQMR-1E-530N <sup>1</sup>	530	1.17	453	BLACK/ DK BLUE
AEQMR-1E-650	650	1.05	619	RED
AEQMR-1E-825N <sup>1</sup>	825	1.07	771	RED/ DK BLUE
AEQMR-1E-1000	1000	1.00	1000	TAN
AEQMR-1E-1200N <sup>1</sup>	1200	1.04	1154	TAN/ DK BLUE
AEQMR-1E-1400	1400	1.00	1400	PINK
AEQMR-1E-1700N <sup>1</sup>	1700	1.10	1545	PINK/ DK BLUE
AEQMR-1E-2000	2000	1.11	1802	WHITE
AEQMR-1E-2330N <sup>1</sup>	2330	1.11	2100	WHITE/ RED
AEQMR-1E-2575N <sup>1</sup>	2575	1.11	2320	WHITE/DK PURPLE
AEQMR-1E-2990N <sup>1</sup>	2990	1.11	2694	WHITE/DK GREEN
AEQMR-1E-3250N <sup>1</sup>	3250	1.04	3125	WHITE/GRAY

NOTES:

1. TWO NESTED SPRINGS YIELD THIS LOAD. THE COLOR CODE IS FOR OUTER SPRING/ INNER SPRING.



NOTES:

- STANDARD ISOLATOR FINISH: CASTING AND BASE PLATE- ONE COAT BLACK PAINT, SPRING- POWDER COAT, HARDWARE- ZINC ELECTROPLATE.
- STATIC LOAD RATINGS ON SHEET 2 OF 2 ARE FOR GUIDANCE ONLY.
- OSHPD R & OPA 0189.

ISOLATOR SELECTIONS

LOC 1:	LOC 2:
LOC 3:	LOC 4:
LOC 5:	LOC 6:
LOC 7:	LOC 8:
CUSTOMER EQPT. TAG:	

NOTE: MATERIAL SHOWN IS FOR (1) SET.

OTHER MATERIALS, COMPOUNDS, OR FINISHES WITH EQUAL OR SUPERIOR PROPERTIES MAY BE SUBSTITUTED AS THEY BECOME AVAILABLE.

CERTIFIED FOR:

JOB NAME: \_\_\_\_\_  
 CUSTOMER: \_\_\_\_\_  
 CUSTOMER P.O.: \_\_\_\_\_  
 SALES ORDER: \_\_\_\_\_

MODEL AEQMR-1E 195-3250 LBS.  
 SEISMIC ISOLATORS  
 1 INCH DEFLECTION



**THE VMC GROUP**  
*The Power of Together*  
 Bloomingdale, NJ 07403  
 Houston, TX 77041

SCALE:

NONE

SHEET:

1 OF 2



DRAWING NO.:

REVISION

REV.	DESCRIPTION	DATE	BY

**INSTALLATION AND ADJUSTMENT INSTRUCTIONS**

1. VERIFY LABEL FOR MODEL DESIGNATION AND STATIC LOAD RATING PRIOR TO INSTALLATION.
2. ISOLATORS ARE SHIPPED FULLY ASSEMBLED AND ARE TO BE SPACED AND LOCATED IN ACCORDANCE WITH INSTALLATION DRAWINGS OR AS OTHERWISE RECOMMENDED.
3. LOCATE ISOLATORS ON A LEVEL FLOOR OR SUB BASE, ENSURING THAT ALL ISOLATOR CENTERLINES MATCH THE EQUIPMENT MOUNTING HOLES. SHIM OR GROUT (USE NON SHRINK GROUT) AS REQUIRED TO LEVEL ALL ISOLATOR BASE PLATES. A 1/4" MAXIMUM. DIFFERENCE IN ELEVATION BE CAN TOLERATED.
4. ANCHOR ALL ISOLATORS TO THE FLOOR OR SUB BASE AS RECOMMENDED.
5. REMOVE AND SAVE 1/2" CAP SCREW AND WASHER. GENTLY PLACE MACHINE OR EQUIPMENT ON TOP OF THE HEAD OF THE 7/8" ADJUSTING BOLT. RE-INSTALL THE 1/2" CAP SCREW AND WASHER, BUT DO NOT TIGHTEN.
6. THE EQUIPMENT WEIGHT WILL CAUSE THE SPRING AND THE ADJUSTING BOLT TO DESCEND.
7. ADJUST EACH AND EVERY ISOLATOR IN SEQUENCE, ONE FULL COUNTER-CLOCKWISE TURN AT A TIME, REPEAT THIS PROCEDURE UNTIL THE 1/4" OPERATING GAP IS OBTAINED. NOTE: IT MAY BE NECESSARY TO ADJUST THE UPWARD REBOUND PLATE TO OBTAIN PROPER GAP.
8. CHECK EQUIPMENT LEVEL AND FINE ADJUST ISOLATORS AS NECESSARY TO OBTAIN EQUIPMENT LEVEL.
9. ADJUST UPWARD REBOUND PLATE TO OBTAIN A 1/4" MAXIMUM GAP.
10. TIGHTEN ALL OF THE 1/2" CAP SCREWS. ADJUSTMENT IS COMPLETE.

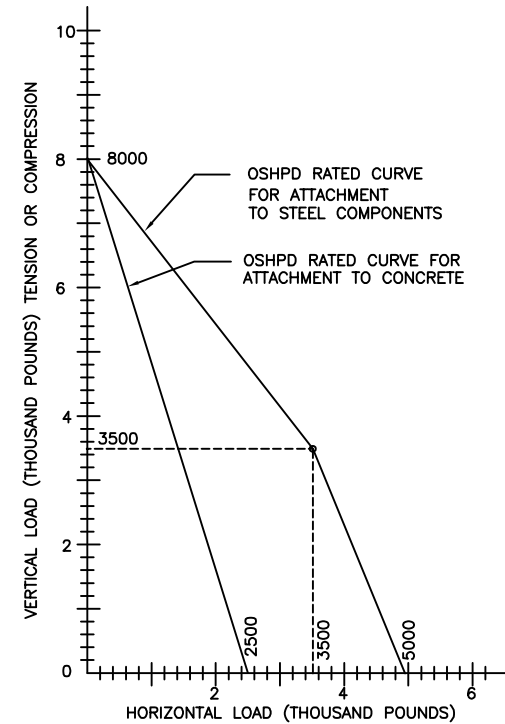
**GENERAL NOTES**

1. HORIZONTAL AND VERTICAL RATINGS OF AEQMR-1E ARE SHOWN IN FIGURE 1. ANALYSES HAVE BEEN PERFORMED IN ACCORDANCE WITH APPLICABLE CODES.
2. TO USE RATED LOAD CURVES:
  - A. CALCULATE VERTICAL AND HORIZONTAL FORCES ACTING ON MOUNTINGS INCLUDING TRANSLATIONS AND OVERTURNING MOMENTS.
  - B. THE INTERSECTION OF THE HORIZONTAL LOAD AND VERTICAL LOAD MUST FALL WITHIN THE RATING CURVE FOR THE SPECIFIC PART AND METHOD OF ATTACHMENT.
3. THE RATED LOAD CURVES ASSUME ONE OF THE FOLLOWING METHODS OF TIE-DOWN AT EACH MOUNT LOCATION:
  - A. FOUR (4) 3/4" DIA. HILTI "KWIK II" WEDGE ANCHORS, WITH MINIMUM 4-3/4" EMBEDMENT INTO 3000 PSI NORMAL WEIGHT CONCRETE. MINIMUM EDGE DISTANCE IS 9-3/4". (NOTE: OTHER BRANDS OF ANCHOR BOLTS ARE MAY BE USED PROVIDED THEY ARE OF EQUAL STRENGTH AND HAVE BEEN APPROVED BY OSHPD). TO ACHIEVE RATED LOAD, "SPECIAL INSPECTION" IS REQUIRED.

a. 50% OR ALTERNATE BOLTS IN A GROUP SHALL BE TESTED USING EITHER TEST VALUE SHOWN BELOW:

ANCHOR DIA.	WEDGE ANCHOR	
	TENSION (LBS)	TORQUE (FT-LBS)
3/4 (IN)	3700	150



- ANCHOR DIA. REFERS TO THE THREAD SIZE FOR WEDGE ANCHOR.
- APPLY PROOF TEST LOAD TO WEDGE ANCHORS WITHOUT REMOVING THE NUT, IF POSSIBLE. IF NOT POSSIBLE, REMOVE NUT AND INSTALL A THREADED COUPLER TO THE SAME TIGHTNESS OF THE ORIGINAL NUT USING A TORQUE WRENCH AND APPLY LOAD.
  - REACTION LOADS FROM TEST FIXTURE MAY BE APPLIED CLOSE TO THE TESTED ANCHOR, PROVIDED THE ANCHOR IS NOT RESTRAINED FROM WITHDRAWING BY THE FIXTURE.
  - TEST EQUIPMENT IS TO BE CALIBRATED BY AN APPROVED TESTING LABORATORY IN ACCORDANCE WITH STANDARD RECOGNIZED PROCEDURE.
  - TESTING SHOULD OCCUR 24 HOURS MINIMUM AFTER THE INSTALLATION OF THE ANCHORS.
  - THE FOLLOWING CRITERIA APPLY FOR THE ACCEPTANCE OF INSTALLED ANCHORS
    - 1) **HYDRAULIC RAM METHOD**  
THE ANCHOR SHOULD HAVE NO OBSERVABLE MOVEMENT AT THE SPECIED TEST LOAD. A PRACTICAL WAY TO DETERMINE OBSERVABLE MOVEMENT IS THAT THE WASHER UNDER THAT NUT BECOMES LOOSE.
    - 2) **TORQUE WRENCH METHOD**  
THE APPLICABLE TEST TORQUE MUST BE REACHED WITHIN ONE-HALF (1/2) TURN OF THE NUT.
  - IF ANY ANCHOR FAILS TESTING, TEST ALL ANCHORS OF THE SAME CATEGORY NOT PREVIOUSLY TESTED UNTIL TWENTY (20) CONSECUTIVE PASS, THEN RESUME THE INITIAL TESTING FREQUENCY.
    - B. FOUR (4) 3/4" DIA. BOLTS PER ASTM A307 OR BETTER.
  - THE SUPPORT STRUCTURE (BY OTHERS) INCLUDING FLOOR, IS THE RESPONSIBILITY OF THE STRUCTURAL ENGINEER OF RECORD FOR A SITE SPECIFIC PROJECT.
  - ALL ISOLATOREQUIPMENT UTILITY CONNECTIONS SHALL HAVE SUFFICIENT FLEXIBILITY TO PERMIT ADEQUATE MOTION IN ALL DIRECTIONS.



**FIGURE 1**

**OSHPD RATED LOADS FOR  
AEQMR-1E-195 THRU -1E-3250N  
PER OSHPD R & OPA 0189  
(SEE SHEET 1 FOR STATIC RATED LOADS)**

OTHER MATERIALS, COMPOUNDS, OR FINISHES WITH EQUAL OR SUPERIOR PROPERTIES MAY BE SUBSTITUTED AS THEY BECOME AVAILABLE.

<b>CERTIFIED FOR:</b>  JOB NAME: _____ CUSTOMER : _____ CUSTOMER P.O.: _____ SALES ORDER: _____	<b>MODEL AEQMR-1E 195-3250 LBS. SEISMIC ISOLATORS 1 INCH DEFLECTION</b>	 <b>THE VMC GROUP</b> The Power of Together Bloomingdale, NJ 07403 Houston, TX 77041	SCALE : NONE	
			SHEET: 2 OF 2	