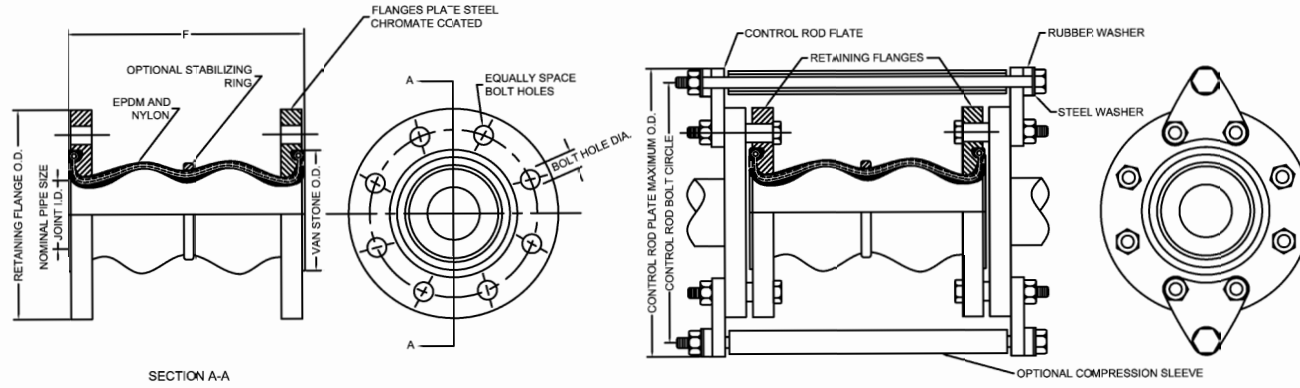


REV.	DESCRIPTION	DATE	BY



NOMINAL PIPE SIZE	F - INSTALLED LENGTH			ALLOWABLE MOVEMENTS FROM NEUTRAL LENGTH				PRESSURE		FLANGE/BOLTING DIMENSIONS				
	NEUTRAL LENGTH	MAXIMUM COMPRESSED	MAXIMUM EXTENDED	AXIAL COMPRESSION	AXIAL EXTENSION	±LATERAL DEFLECTION	ANGULAR DEFLECTION	POSITIVE PSIG	NEGATIVE IN. OF HG	FLANGE THICKNESS	FLANGE O.D.	BOLT CIRCLE	HOLE QTY.	HOLE SIZE
2	7.00	5.000	8.188	2.000	1.188	1.750	45°	225	26.0	0.63	6.00	4.75	4	0.750
2-1/2	7.00	5.000	8.188	2.000	1.188	1.750	43°	225	26.0	0.71	7.00	5.50	4	0.750
3	7.00	5.000	8.188	2.000	1.188	1.750	38°	225	26.0	0.71	7.50	6.00	4	0.750
4	9.00	7.000	10.375	2.000	1.375	1.562	34°	225	26.0	0.71	9.00	7.50	8	0.750
5	9.00	7.000	10.375	2.000	1.375	1.562	29°	225	26.0	0.79	10.00	8.50	8	0.875
6	9.00	7.000	10.375	2.000	1.375	1.562	25°	225	26.0	0.87	11.00	9.50	8	0.875
8	13.00	10.625	14.375	2.375	1.375	1.375	19°	225	26.0	0.87	13.50	11.75	8	0.875
10	13.00	10.625	14.375	2.375	1.375	1.375	15°	225	26.0	0.95	16.00	14.25	12	1.000
12	13.00	10.625	14.375	2.375	1.375	1.375	13°	225	26.0	0.95	19.00	17.00	12	1.000
14	13.75	12.000	14.868	1.750	1.118	1.118	9°	150	26.0	1.02	21.00	18.75	12	1.125
16	13.75	12.000	14.868	1.750	1.118	1.118	8°	125	26.0	1.10	23.50	21.25	16	1.125
18	13.75	12.000	14.868	1.750	1.118	1.118	7°	125	26.0	1.18	25.00	22.75	16	1.250
20	13.75	12.000	14.868	1.750	1.118	1.118	7°	125	26.0	1.18	27.50	25.00	20	1.250
24	13.75	12.000	14.868	1.750	1.118	1.118	5°	110	26.0	1.18	32.06	29.50	20	1.375

- NOTES:
- 1) ALL DIMENSIONS IN INCHES.
 - 2) PRESSURE RATING BASED ON 170 °F OPERATING TEMPERATURE WITH BURST PRESSURE APPROXIMATELY 4 TIMES OPERATING PRESSURE.
 - 3) MAXIMUM OPERATING TEMPERATURE 250 °F.
 - 4) FLOATING STEEL FLANGES DRILLED TO MATE WITH 150# ASA COMPANION FLANGES.
 - 5) CONTROL UNITS ARE REQUIRED WHERE ALLOWABLE MOVEMENTS WILL BE EXCEEDED. UNANCHORED PIPING MUST BE RESTRAINED IN A MANNER TO PREVENT MOVEMENT IN EXCESS OF ALLOWABLE LEVELS.
 - 6) FLANGES WILL BE FURNISHED WITH DRILLED HOLES AS STANDARD. TAPPED HOLES AVAILABLE SPECIAL ORDER.
 - 7) STANDARD EPDM OR NEOPRENE. OTHER MATERIALS ARE AVAILABLE.
 - 8) COMPOUNDS OR FINISHES WITH EQUAL OR SUPERIOR PROPERTIES MAY BE SUBSTITUTED AS THEY BECOME AVAILABLE.
 - 9) REFER TO DRAWINGS II-5210 AND II-5212 FOR INSTALLATION INSTRUCTIONS.

WARNING: EXPANSION JOINTS MAY OPERATE IN PIPELINES OR EQUIPMENT CARRYING FLUIDS AND/OR GASES AT ELEVATED TEMPERATURES AND PRESSURES. NORMAL PRECAUTIONS SHOULD BE TAKEN TO MAKE SURE THESE PARTS ARE INSTALLED CORRECTLY AND INSPECTED REGULARLY. PRECAUTIONS SHOULD BE TAKEN TO PROTECT PERSONNEL IN THE EVENT OF LEAKAGE OR SPLASH.

OTHER MATERIALS, COMPOUNDS OR FINISHES WITH EQUAL OR SUPERIOR PROPERTIES MAY BE SUBSTITUTED AS THEY BECOME AVAILABLE.

CERTIFIED FOR:

JOB NAME: _____
 CUSTOMER : _____
 CUSTOMER P.O.: _____
 SALES ORDER: _____

**MODEL 2600 RUBBER EXPANSION JOINT
 DOUBLE SPHERE**



THE VMC GROUP
The Power of Together
 Bloomingdale, NJ 07403
 Houston, TX 77041

SCALE :

NONE

SHEET:



DRAWING NO.:

REVISION