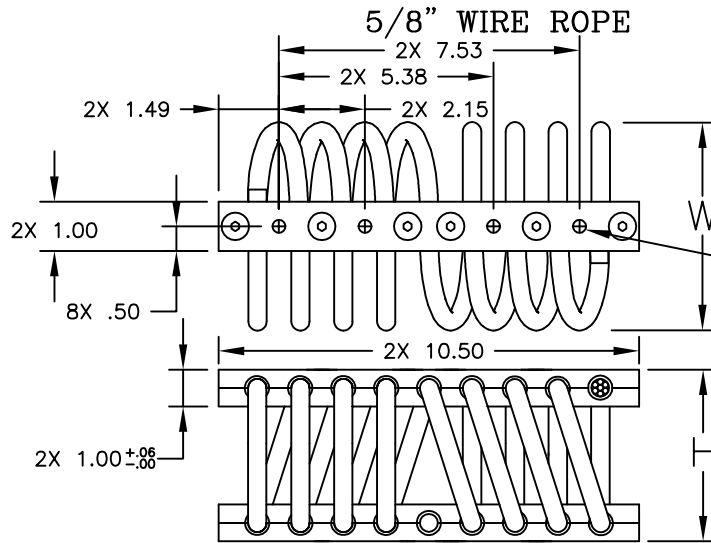


CB1500 SERIES



MOUNTING HOLE SUFFIX OPTIONS.

- [] BLANK= ϕ .41 THRU 8PL
- C2= ϕ .41 THRU C'SINK ϕ .81 x 82' 8PL
- I2= #3/8-24 INSERTS 8PL
- CI= #3/8-24 INSERTS 4PL ϕ .41 THRU C'SINK ϕ .81 x 82' 4PL

ISOLATOR PART NO.	NOMINAL DIMENSIONS (in)		LOAD MODE	SHOCK AVERAGE K (lb/in)	VIBRATION AVERAGE K (lb/in)	MAX. RATED DYNAMIC TRAVEL (in)
	H \pm .09	W(REF)				
CB1500-12-[]	3.50	4.00	COMPRESSION SHEAR/ROLL 45 DEG. C/R	5375 2735 3290	12625 2950 9100	1.20 1.20 1.80
CB1500-15-[]	3.90	4.40	COMPRESSION SHEAR/ROLL 45 DEG. C/R	3655 1870 2265	8095 2100 5525	1.40 1.40 2.20
CB1500-20-[]	4.30	5.30	COMPRESSION SHEAR/ROLL 45 DEG. C/R	2585 1250 1595	5525 1350 3775	1.80 1.80 2.80
CB1500-30-[]	4.70	6.00	COMPRESSION SHEAR/ROLL 45 DEG. C/R	1610 800 995	3425 1060 2425	2.20 2.20 3.20
CB1500-40-[]	5.00	6.50	COMPRESSION SHEAR/ROLL 45 DEG. C/R	1155 560 620	2450 750 1675	2.40 2.40 3.60
CB1500-50-[]	5.30	7.00	COMPRESSION SHEAR/ROLL 45 DEG. C/R	795 410 440	1700 550 1275	3.20 3.20 4.40
CB1500-70-[]	6.00	8.00	COMPRESSION SHEAR/ROLL 45 DEG. C/R	650 330 265	1275 430 870	3.70 4.00 5.00

NOTES

1. ALL DIMENSIONS ARE IN INCHES. INTERPRET PER ANSI Y14
2. ALL DIMENSIONS ARE NOMINAL AND FOR REFERENCE ONLY

OTHER MATERIALS, COMPOUNDS, OR FINISHES WITH EQUAL OR SUPERIOR PROPERTIES MAY BE SUBSTITUTED AS THEY BECOME AVAILABLE.

CERTIFIED FOR:

JOB NAME: _____
 CUSTOMER: _____
 CUSTOMER P.O.: _____
 SALES ORDER: _____

**MODEL CB1500 SERIES
 WIRE ROPE ISOLATOR**



THE VMC GROUP
The Power of Together
 Bloomingdale, NJ 07403
 Houston, TX 77041

SCALE:

NONE

SHEET:



DRAWING NO.:

REVISION