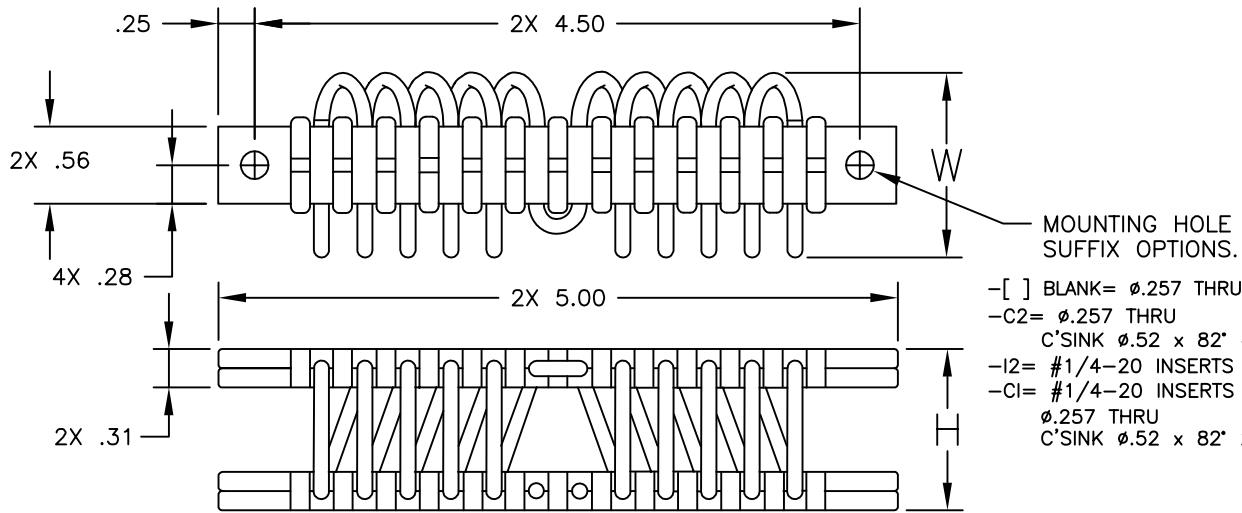


# C5 SERIES

## 5/32" WIRE ROPE



ISOLATOR PART NO.	NOMINAL DIMENSIONS (in)		LOAD MODE	SHOCK AVERAGE K (lb/in)	VIBRATION AVERAGE K (lb/in)	MAX. RATED DYNAMIC TRAVEL (in)
	H $\pm$ .06	W(REF)				
C5-H-310-[-]	1.10	1.40	COMPRESSION SHEAR/ROLL 45 DEG. C/R	1310 650 485	1750 635 985	.40 .50 .70
C5-H-410-[-]	1.20	1.50	COMPRESSION SHEAR/ROLL 45 DEG. C/R	1045 520 400	1550 490 810	.50 .60 .80
C5-H-510-[-]	1.30	1.60	COMPRESSION SHEAR/ROLL 45 DEG. C/R	640 315 220	1035 250 620	.60 .70 .90
C5-H-610-[-]	1.40	1.70	COMPRESSION SHEAR/ROLL 45 DEG. C/R	555 245 180	885 175 555	.70 .80 1.00
C5-H-710-[-]	1.50	1.80	COMPRESSION SHEAR/ROLL 45 DEG. C/R	440 200 140	740 175 415	.80 .90 1.10
C5-H-810-[-]	1.60	1.90	COMPRESSION SHEAR/ROLL 45 DEG. C/R	365 180 120	610 120 350	.90 1.00 1.20

OTHER MATERIALS, COMPOUNDS, OR FINISHES WITH EQUAL OR SUPERIOR PROPERTIES MAY BE SUBSTITUTED AS THEY BECOME AVAILABLE.

**CERTIFIED FOR:**

JOB NAME: \_\_\_\_\_  
 CUSTOMER: \_\_\_\_\_  
 CUSTOMER P.O.: \_\_\_\_\_  
 SALES ORDER: \_\_\_\_\_

### MODEL C5 SERIES HELICAL WIRE ROPE ISOLATOR



**THE VMC GROUP**  
*The Power of Together*  
 Bloomingdale, NJ 07403  
 Houston, TX 77041

SCALE:

NONE

SHEET:



DRAWING NO.:

REVISION