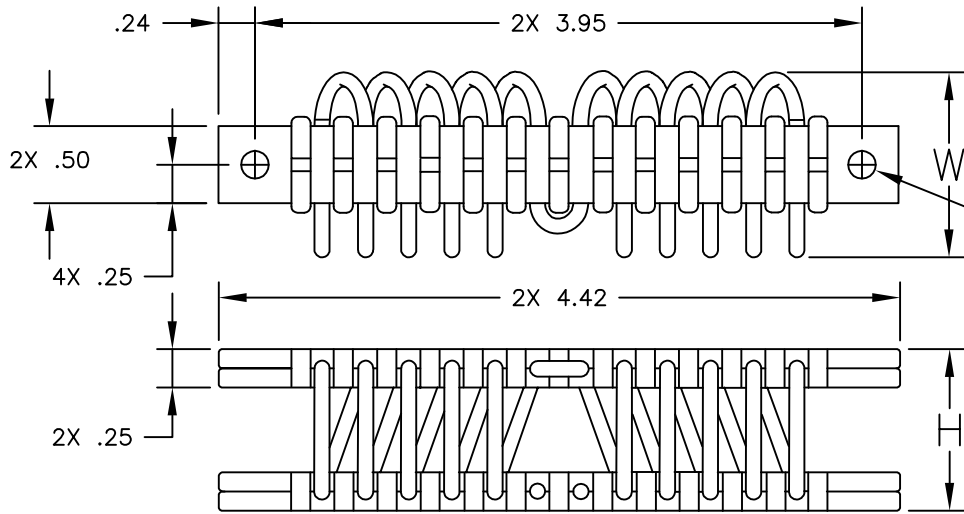


# C3 SERIES

## 3/32" WIRE ROPE



MOUNTING HOLE SUFFIX OPTIONS.

- [ ] BLANK=  $\phi$ .196 THRU 4PL
- C2=  $\phi$ .196 THRU  
C'SINK  $\phi$ .39 x 82' 4PL
- I2= #10-32 INSERTS 4PL
- CI= #10-32 INSERTS 2PL  
 $\phi$ .196 THRU  
C'SINK  $\phi$ .39 x 82' 2PL

ISOLATOR PART NO.	NOMINAL DIMENSIONS (in)		LOAD MODE	SHOCK AVERAGE K (lb/in)	VIBRATION AVERAGE K (lb/in)	MAX. RATED DYNAMIC TRAVEL (in)
	H $\pm$ .06	W(REF)				
C3-H-310-[ ]	.90	1.10	COMPRESSION SHEAR/ROLL 45 DEG. C/R	340 155 130	480 140 260	.30 .40 .60
C3-H-410-[ ]	1.00	1.20	COMPRESSION SHEAR/ROLL 45 DEG. C/R	275 120 100	385 105 200	.35 .50 .70
C3-H-510-[ ]	1.10	1.30	COMPRESSION SHEAR/ROLL 45 DEG. C/R	200 90 55	285 75 145	.40 .55 .80
C3-H-610-[ ]	1.30	1.50	COMPRESSION SHEAR/ROLL 45 DEG. C/R	100 45 40	155 45 100	.60 .70 1.00
C3-H-710-[ ]	1.40	1.60	COMPRESSION SHEAR/ROLL 45 DEG. C/R	55 35 30	85 35 65	.80 .80 1.20
C3-H-810-[ ]	1.50	1.70	COMPRESSION SHEAR/ROLL 45 DEG. C/R	40 25 20	70 30 50	.90 .90 1.20

OTHER MATERIALS, COMPOUNDS, OR FINISHES WITH EQUAL OR SUPERIOR PROPERTIES MAY BE SUBSTITUTED AS THEY BECOME AVAILABLE.

**CERTIFIED FOR:**

JOB NAME: \_\_\_\_\_  
 CUSTOMER: \_\_\_\_\_  
 CUSTOMER P.O.: \_\_\_\_\_  
 SALES ORDER: \_\_\_\_\_

**MODEL C3 SERIES  
 HELICAL WIRE ROPE  
 ISOLATOR**



**THE VMC GROUP**  
*The Power of Together*  
 Bloomingdale, NJ 07403  
 Houston, TX 77041

SCALE:

NONE

SHEET:



DRAWING NO.:

REVISION