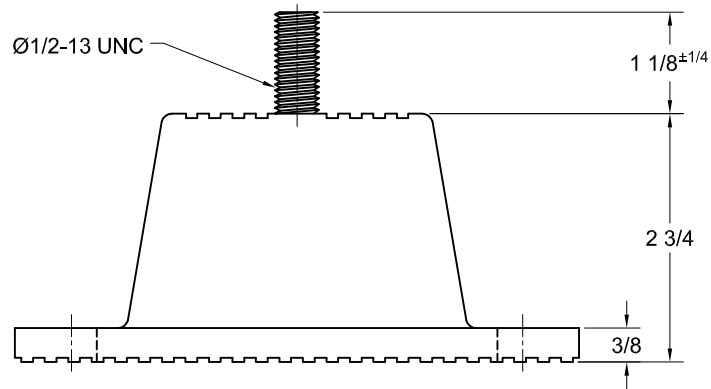
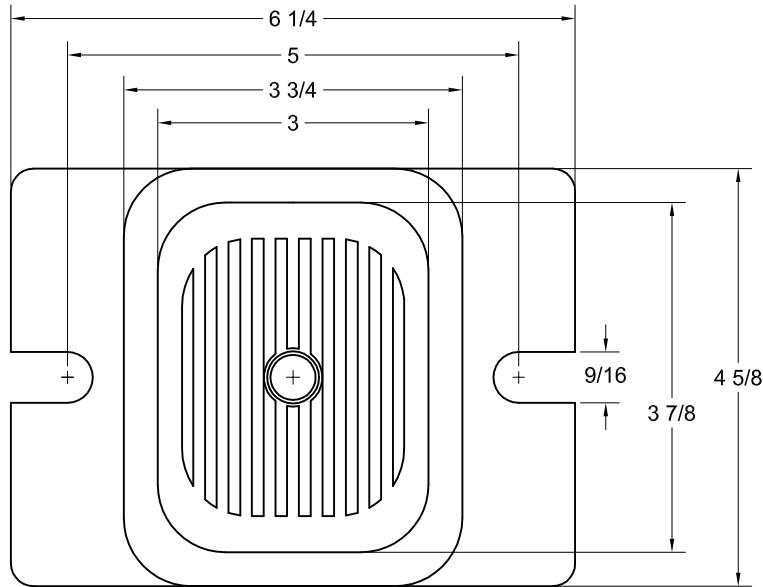
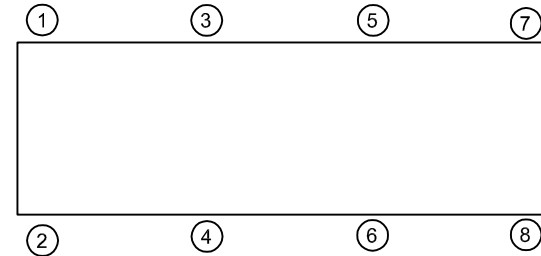


REV.	DESCRIPTION	DATE	BY



PART NUMBER	MODEL	RATED AXIAL LOAD (LBS.)
114A-100425-07	RDP4-LIGHT BLUE-WR	750
114A-100425-08	RDP4-DK BROWN-WR	1500
114A-100425-09	RDP4-RUST RED-WR	2250
114A-100425-10	RDP4-LIME GREEN-WR	3000
114A-100425-11	RDP4-CHARCOAL GRAY-WR	4000
114A-100425-12	RDP4-PURPLE-WR	6000



ISOLATOR SELECTIONS	
LOC 1:	LOC 2:
LOC 3:	LOC 4:
LOC 5:	LOC 6:
LOC 7:	LOC 8:
CUSTOMER EQPT. TAG:	

NOTE: MATERIAL SHOWN IS FOR (1) SET.

**NOTES:**

1. ALL DIMENSIONS ARE NOMINAL IN INCHES, INTERPRET PER ANSI Y14.
2. MOLDED STEEL AND ELASTOMERIC ISOLATOR NON FAIL SAFE, SERVICE CONDITIONS. CONTACT THE VMC GROUP FOR APPLICABILITY
3. HARDWARE: ELECTRO-ZINC PLATED
3. MODEL COLORS ARE ACTUAL MOUNT COLOR IN ADDITION TO MODEL TYPE STAMPING
4. ADDITIONAL ELASTOMER TYPES & CAPACITIES AVAILABLE, CONTACT THE VMC GROUP FOR APPLICABILITY.

OTHER MATERIALS, COMPOUNDS, OR FINISHES WITH EQUAL OR SUPERIOR PROPERTIES MAY BE SUBSTITUTED AS THEY BECOME AVAILABLE.

**CERTIFIED FOR:**

JOB NAME: \_\_\_\_\_  
 CUSTOMER: \_\_\_\_\_  
 CUSTOMER P.O.: \_\_\_\_\_  
 SALES ORDER: \_\_\_\_\_

**MODEL RDP4 750-6000 LBS.  
 DURULENE ELASTOMERIC ISOLATOR  
 0.5 INCH DEFLECTION**



**THE VMC GROUP**  
*The Power of Together*  
 Bloomingdale, NJ 07403  
 Houston, TX 77041

SCALE:

NONE

SHEET:



DRAWING NO.:

REVISION