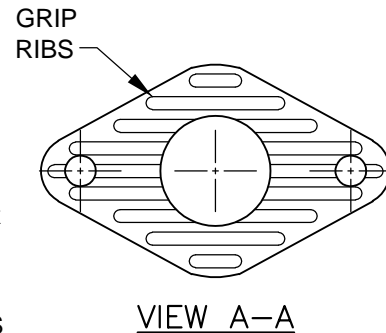
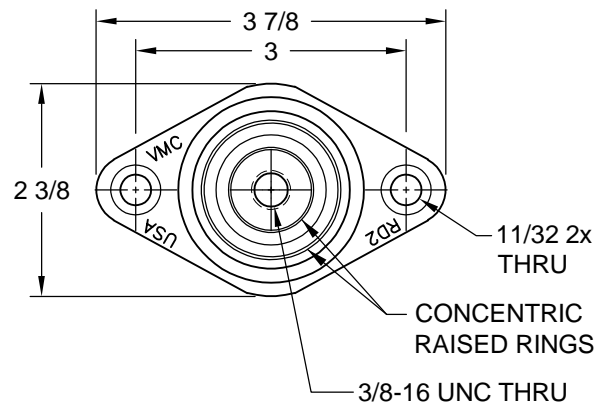
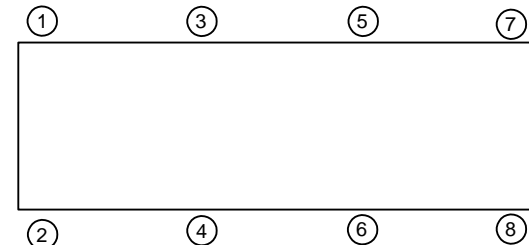
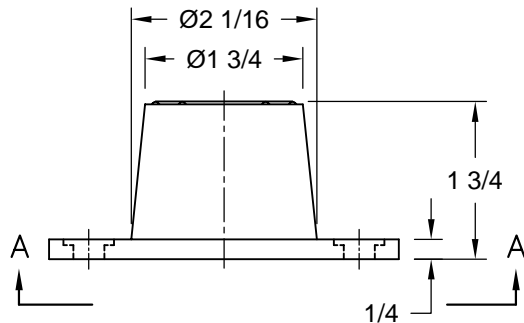


REV.	DESCRIPTION	DATE	BY



MODEL, ELASTOMERIC, RD2 DURULENE				
PART NUMBER	MODEL	RATED AXIAL LOAD-LBS	SHORE A DURO ±5%	RATED DEFLECTION
114A-100317-01	RD2-LT BLUE-WR	135	30	0.50
114A-100317-02	RD2-DK BROWN-WR	170	40	0.50
114A-100317-03	RD2-RUST RED-WR	240	50	0.50
114A-100317-04	RD2-LIME GREEN-WR	380	60	0.50
114A-100317-05	RD2-CHARCOAL GRAY-WR	550	70	0.50
114A-100317-06	RD2-PURPLE-WR	640	80	0.50



NOTES:

1. ALL DIMENSIONS ARE IN INCHES, INTERPRET PER ANSI Y14.
2. ALL DIMENSIONS ARE NOMINAL AND FOR REFERENCE ONLY.
3. MOLDED STEEL AND ELASTOMER MOUNT FOR NON-FAIL SAFE, SERVICE CONDITIONS. CONSULT VMC FOR APPLICABILITY.
4. COLOR CODE APPLIES TO ACTUAL MATERIAL.

ISOLATOR SELECTIONS

LOC 1:	LOC 2:
LOC 3:	LOC 4:
LOC 5:	LOC 6:
LOC 7:	LOC 8:
CUSTOMER EQP'T. TAG:	

NOTE: MATERIAL SHOWN IS FOR (1) SET.

OTHER MATERIALS, COMPOUNDS, OR FINISHES WITH EQUAL OR SUPERIOR PROPERTIES MAY BE SUBSTITUTED AS THEY BECOME AVAILABLE.

CERTIFIED FOR:

JOB NAME: _____

CUSTOMER: _____

CUSTOMER P.O.: _____

SALES ORDER: _____

MODEL RD2 135-550 LBS.
DURULENE ELASTOMERIC ISOLATOR
0.5 INCH DEFLECTION



VMC
GROUP
THE POWER OF TOGETHER™
Bloomington, NJ 07403
Houston, TX 77041

SCALE:

NONE

SHEET:

1 OF 1

DRAWING NO.:

REVISION

Member
VISCMA