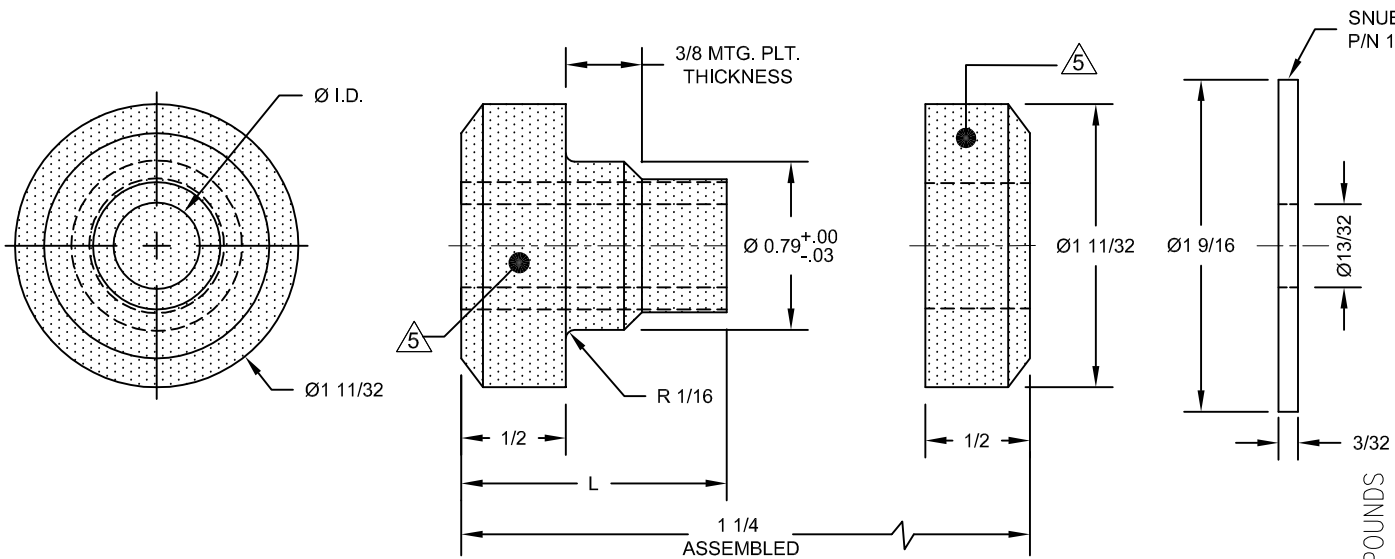


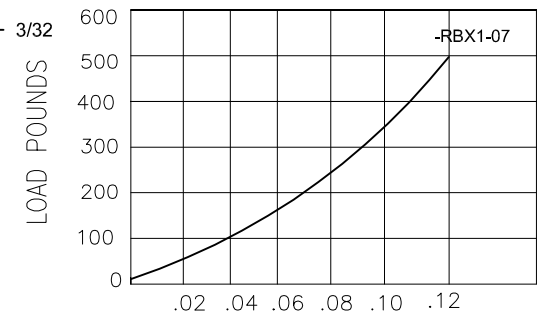
REV.	DESCRIPTION	DATE	BY

PART NO	MODEL NO.	AXIAL STATIC LOAD MAX LBS.	RADIAL STATIC LOAD MAX LBS.	DUROMETER ±5	MATERIAL	I.D. 01	L
770017-1	RBX1-01	△6	△6	50	EPDM	0.322	1.25
770017-2	RBX1-02	△6	△6	50	EPDM	0.391	1.20
770017-3	RBX1-03	△6	△6	55	NITRILE	0.391	1.25
770017-4	RBX1-04	△6	△6	50	EPDM	0.391	1.25
770017-5	RBX1-05	△6	△6	50	EPDM	0.391	1.13
770017-6	RBX1-06	△6	△6	45	NITRILE	0.391	1.25
770017-7	RBX1-07	200	50	70	NITRILE	0.391	1.25
770017-8	RBX1-08	△6	△6	80	BRG. BEARING NEO.	0.322	1.25



SNUBBING WASHER
P/N 148099-1 △3

AXIAL LOAD Vs. DEFLECTION



- NOTES:
1. ALL DIMENSIONS ARE IN INCHES .INTERPRET PER ANSI Y14
 2. ALL DIMENSIONS ARE NOMINAL AND FOR REFERENCE ONLY.
 - △3 SNUBBING WASHER IS OPTIONAL, ORDER SEPERATE ON PURCHASE ORDER.
 - FINISH :YELLOW ZINC PLATED PER ASTM B633 TYPE II, CLASS SC 3 UNLESS OTHERWISE SPECIFIED .
 - △4 COLOR-CODE "MARK "IS AN ACCEPTABLE ADDITION TO MODEL STAMPING .
 - △5 STAMPING SURFACE LOCATION AS MARKED ON DRAWING .
 - △6 CURRENTLY UNDER ENGINEERING REVIEW CONTACT VMC FOR AVAILABILITY

DEFLECTION IN INCHES
OTHER MATERIALS, COMPOUNDS, OR FINISHES WITH EQUAL OR SUPERIOR PROPERTIES MAY BE SUBSTITUTED AS THEY BECOME AVAILABLE.

CERTIFIED FOR:

JOB NAME: _____
 CUSTOMER : _____
 CUSTOMER P.O.: _____
 SALES ORDER: _____

**MODEL RBX1 200 LBS.
 RING AND BUSHING
 ELASTOMERIC ISOLATOR**



THE VMC GROUP
The Power of Together
 Bloomingdale, NJ 07403
 Houston, TX 77041

SCALE :

NONE

SHEET:



DRAWING NO.:

REVISION