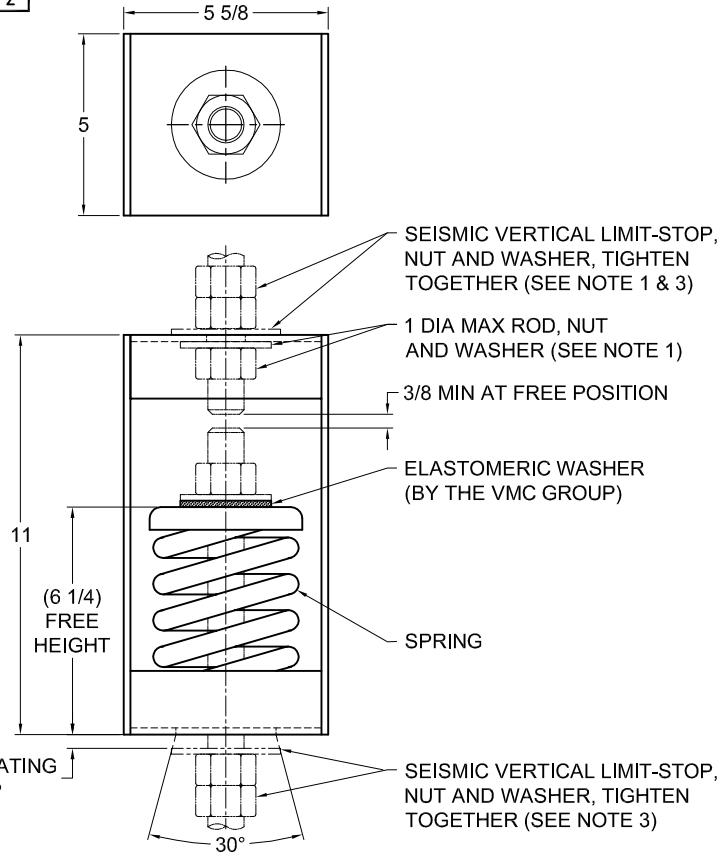


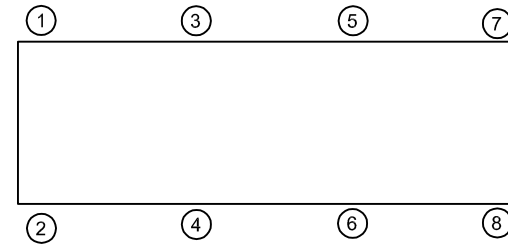
| REV. | DESCRIPTION | DATE | BY |
|------|-------------|------|----|
|      |             |      |    |



| TYPE HSA-2E PRE-COMPRESSED SPRING ANGULARITY HANGERS FOR 2" NOMINAL DEFLECTION |                  |                 |                     |                   |
|--|------------------|-----------------|---------------------|-------------------|
| HANGER   | RATED LOAD (LBS) | DEFLECTION (IN) | SPRING RATE (LB/IN) | SPRING COLOR CODE |
| HSA-2E-80PR  | 80               | 2.00            | 40                  | BLACK             |
| HSA-2E-150PR   | 150              | 2.00            | 75                  | GREEN             |
| HSA-2E-300PR   | 300              | 2.00            | 150                 | DK YELLOW         |
| HSA-2E-500PR   | 500              | 2.00            | 250                 | BLUE              |
| HSA-2E-1000PR  | 1000             | 2.00            | 500                 | TAN               |
| HSA-2E-1400PR  | 1400             | 1.87            | 749                 | RED               |
| HSA-2E-1800PR  | 1800             | 1.71            | 1053                | DK GRAY           |
| HSA-2E-2050PR  | 2050             | 1.64            | 1250                | DK BLUE           |

**NOTES:**

- HANGER RODS, NUTS AND WASHERS, AS SHOWN, NOT BY THE VMC GROUP. INSTALL WASHER .16 THK. MIN. X 3 O.D. MIN. WITH REQUIRED INSIDE DIAMETER TO ACCOMMODATE ROD SIZE IN USE. THIS CAN BE ACCOMPLISHED BY USING A SINGLE WASHER OR BY STACKING NOT MORE THAN TWO WASHERS.
- STANDARD FINISH: HANGER BOX - PAINTED, POWDER COATED OR GALVANIZED STEEL, SPRING - POWDER COAT.
- SEISMIC VERTICAL LIMIT-STOP REQUIRED FOR SEISMIC APPLICATIONS.
- ALL DIMENSIONS IN INCHES. INTERPRET PER ANSI Y14.
- ALL DIMENSIONS ARE FOR REFERENCE, DIMENSIONS SHOWN AS NOMINAL.
- ALL SPRINGS ARE DESIGNED WITH MINIMUM 50% OVER-TRAVEL.
- HANGER BOXES ARE AVAILABLE PRE-COMPRESSED UP TO THEIR DESIGNATED MAX. LOAD. PERCENTAGE OF PRE-COMPRESSION TO BE DETERMINED BY ENGINEERED APPLICATION OR AS REQUESTED BY CUSTOMER. CONSULT FACTORY FOR POSSIBLE ADDITIONAL PARAMETERS AND OR LIMITATIONS.
- DOUBLE LOWER NUT PROVIDED.
- ROD EXTENSION BELOW LOWER NUT EXTENDS (1.5XROD DIA.) AS SHIPPED.
- PRE-COMPRESSED 50% OF SPRING RATED DEFLECTION.
- RATED DEFLECTIONS ARE WITHIN 25% OF NOMINAL. HIGHER DEFLECTIONS ARE ALLOWED IF THEY MEET SPECIFICATIONS.



**ISOLATOR SELECTIONS**

|                      |        |
|----------------------|--------|
| LOC 1:               | LOC 2: |
| LOC 3:               | LOC 4: |
| LOC 5:               | LOC 6: |
| LOC 7:               | LOC 8: |
| CUSTOMER EQP'T. TAG: |        |

NOTE: MATERIAL SHOWN IS FOR (1) SET.

OTHER MATERIALS, COMPOUNDS, OR FINISHES WITH EQUAL OR SUPERIOR PROPERTIES MAY BE SUBSTITUTED AS THEY BECOME AVAILABLE.

**CERTIFIED FOR:**

JOB NAME: \_\_\_\_\_  
 CUSTOMER : \_\_\_\_\_  
 CUSTOMER P.O.: \_\_\_\_\_  
 SALES ORDER: \_\_\_\_\_

**MODEL HSA-2E 80-2050 LBS.  
 PRE-COMPRESSED  
 SPRING ANGULARITY HANGERS  
 2 INCH DEFLECTION**



**THE VMC GROUP**  
*The Power of Together*  
 Bloomingdale, NJ 07403  
 Houston, TX 77041

SCALE :  
 NONE

SHEET:  
 1 OF 1

DRAWING NO.:



REVISION