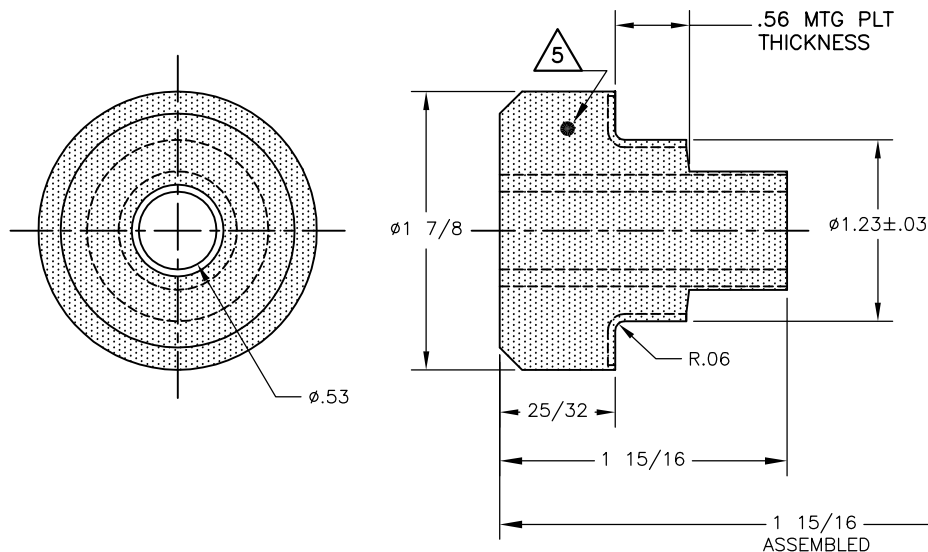


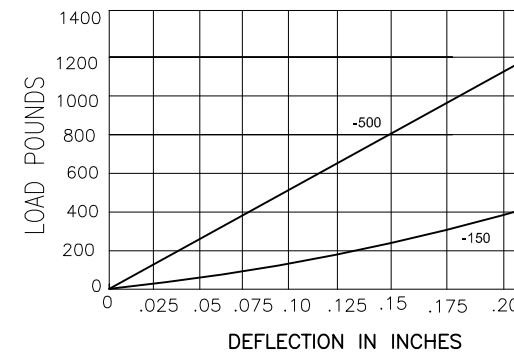
TYPE RBS2 ELASTOMERIC RING & BUSHING BRIDGE BEARING NEOPRENE

PART NO.	MODEL NO.	AXIAL STATIC LOAD MAX LBS.	RADIAL STATIC LOAD MAX LBS.	DUROMETER	COLOR CODE	MATERIAL
770110-1	RBS2-01	500	200	70	PURPLE/GRN	BR BRG NEO
770110-30	RBS2-30	$\triangle 6$	$\triangle 6$	30	BLACK	BR BRG NEO



SNUBBING WASHER
P/N 148099-18

AXIAL LOAD Vs. DEFLECTION



NOTES:

- ALL DIMENSIONS ARE IN INCHES .INTERPRET PER ANSI Y14
- ALL DIMENSIONS ARE NOMINAL AND FOR REFERENCE ONLY .
- SNUBBING WASHER IS OPTIONAL, ORDER SEPERATE ON PURCHASE ORDER .
FINISH :YELLOW ZINC PLATED PER ASTM B633 TYPE II, CLASS SC 3 UNLESS OTHERWISE SPECIFIED .
- COLOR-CODE "MARK "IS AN ACCEPTABLE ADDITION TO MODEL STAMPING .
- STAMPING SURFACE LOCATION AS MARKED ON DRAWING .
- CURRENTLY UNDER ENGINEERING REVIEW CONTACT VMC FOR AVAILABILITY

OTHER MATERIALS, COMPOUNDS, OR FINISHES WITH EQUAL OR SUPERIOR PROPERTIES MAY BE SUBSTITUTED AS THEY BECOME AVAILABLE.

CERTIFIED FOR:

JOB NAME: _____

CUSTOMER : _____

CUSTOMER P.O.: _____

SALES ORDER: _____

MODEL RBS2 500 LBS.
RING AND BUSHING
BRIDGE BEARING
ELASTOMERIC ISOLATOR
WITH WEAR PLATE



THE VMC GROUP
The Power of Together
Bloomington, NJ 07403
Houston, TX 77041

SCALE :

NONE

SHEET:

1 OF 1

DRAWING NO.:

REVISION

Member
VISCMA