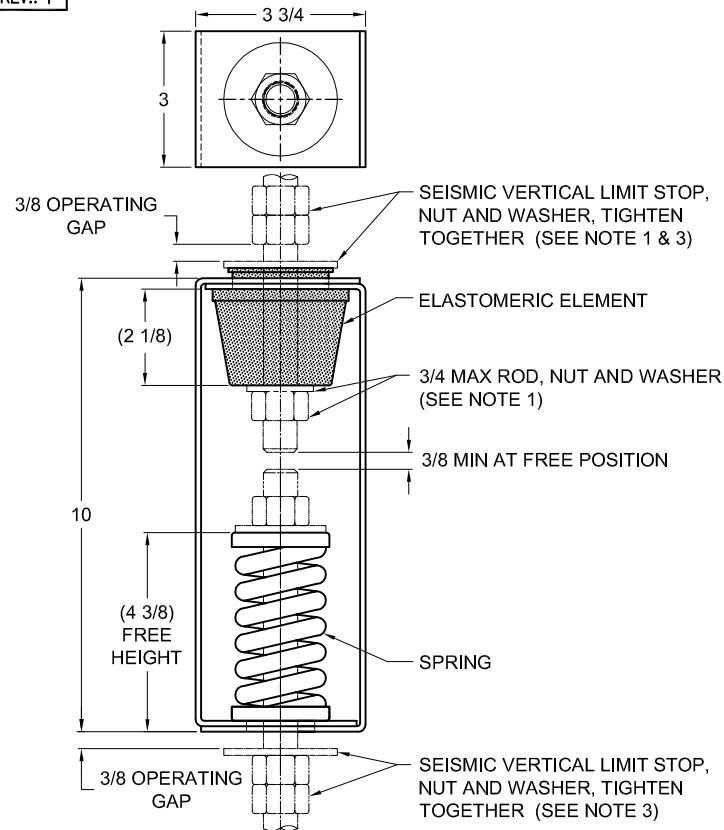


135R-103802 REV.: 1

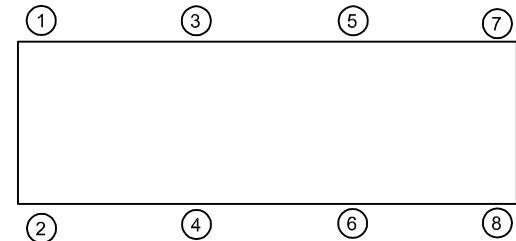
| REV. | DESCRIPTION | DATE | BY |
|------|-------------|------|----|
|      |             |      |    |



| TYPE HRS-1D PRE-COMPRESSED ELASTOMERIC & SPRING HANGERS<br>FOR 1" NOMINAL DEFLECTION |                  |                 |                      |                   |                           |
|--|------------------|-----------------|----------------------|-------------------|---------------------------|
| HANGER   | RATED LOAD (LBS) | DEFLECTION (IN) | SPRING RATE (LBS/IN) | SPRING COLOR CODE | ELEMENT LOAD & COLOR CODE |
| HRS-1D-85PR  | 85               | 1.46            | 63                   | LT PURPLE         | RE-C-380 BLACK            |
| HRS-1D-120PR   | 120              | 1.36            | 100                  | DK YELLOW         | RE-C-380 BLACK            |
| HRS-1D-175PR   | 175              | 1.40            | 150                  | DK BLUE           | RE-C-380 BLACK            |
| HRS-1D-250PR   | 250              | 1.73            | 179                  | YELLOW            | RE-C-380 BLACK            |
| HRS-1D-340PR   | 340              | 1.58            | 300                  | RED               | RE-C-380 BLACK            |
| HRS-1D-510PR   | 510              | 1.51            | 500                  | BLACK             | RE-C-520 RED              |
| HRS-1D-675PR   | 675              | 1.72            | 513                  | DK PURPLE         | RE-C-840 GREEN            |
| HRS-1D-900PR   | 900              | 1.44            | 881                  | DK GREEN          | RE-C-1070 GRAY            |
| HRS-1D-1200PR  | 1200             | 1.20            | 1327                 | GRAY              | RE-C-2000 BLUE            |
| HRS-1D-1360PR  | 1360             | 1.11            | 1758                 | WHITE             | RE-C-2000 BLUE            |

**NOTES:**

- HANGER RODS, NUTS AND WASHERS, AS SHOWN, NOT BY THE VMC GROUP. INSTALL WASHER .148 THK. MIN. X 2 O.D. MIN. WITH REQUIRED INSIDE DIAMETER TO ACCOMMODATE ROD SIZE IN USE. THIS CAN BE ACCOMPLISHED BY USING A SINGLE WASHER OR BY STACKING NOT MORE THAN TWO WASHERS.
- STANDARD FINISH: HANGER BOX - PAINTED, POWDER COATED OR GALVANIZED STEEL, SPRING - POWDER COAT.
- SEISMIC VERTICAL LIMIT-STOP HARDWARE REQUIRED FOR SEISMIC APPLICATIONS.
- ALL DIMENSIONS IN INCHES. INTERPRET PER ANSI Y14.
- ALL DIMENSIONS ARE FOR REFERENCE, DIMENSIONS SHOWN AS NOMINAL.
- ALL SPRINGS ARE DESIGNED WITH MINIMUM 50% OVER-TRAVEL.
- HANGER BOXES ARE AVAILABLE PRE-COMPRESSED UP TO THEIR DESIGNATED MAX. LOAD. PERCENTAGE OF PRE-COMPRESSION TO BE DETERMINED BY ENGINEERED APPLICATION OR AS REQUESTED BY CUSTOMER. CONSULT FACTORY FOR POSSIBLE ADDITIONAL PARAMETERS AND OR LIMITATIONS.
- HANGER BOXES WITH AN ELASTOMERIC ELEMENT HAVE UP TO AN ADDITIONAL 1/2" NOMINAL DEFLECTION
- RATED DEFLECTIONS ARE WITHIN 25% OF NOMINAL. HIGHER DEFLECTIONS ARE ALLOWED IF THEY MEET SPECIFICATIONS.

**ISOLATOR SELECTIONS**

|                      |        |
|----------------------|--------|
| LOC 1:               | LOC 2: |
| LOC 3:               | LOC 4: |
| LOC 5:               | LOC 6: |
| LOC 7:               | LOC 8: |
| CUSTOMER EQP'T. TAG: |        |

NOTE: MATERIAL SHOWN IS FOR (1) SET.

OTHER MATERIALS, COMPOUNDS, OR FINISHES WITH EQUAL OR SUPERIOR PROPERTIES MAY BE SUBSTITUTED AS THEY BECOME AVAILABLE.

**CERTIFIED FOR:**

JOB NAME: \_\_\_\_\_

CUSTOMER: \_\_\_\_\_

CUSTOMER P.O.: \_\_\_\_\_

SALES ORDER: \_\_\_\_\_

MODEL HRS-1D 85-1360 LBS.  
PRE-COMPRESSED  
ELASTOMERIC AND SPRING HANGERS  
1 INCH DEFLECTION



**THE VMC GROUP**  
The Power of Together  
Bloomingdale, NJ 07403  
Houston, TX 77041

SCALE:

NONE

SHEET:



DRAWING NO.:

REVISION