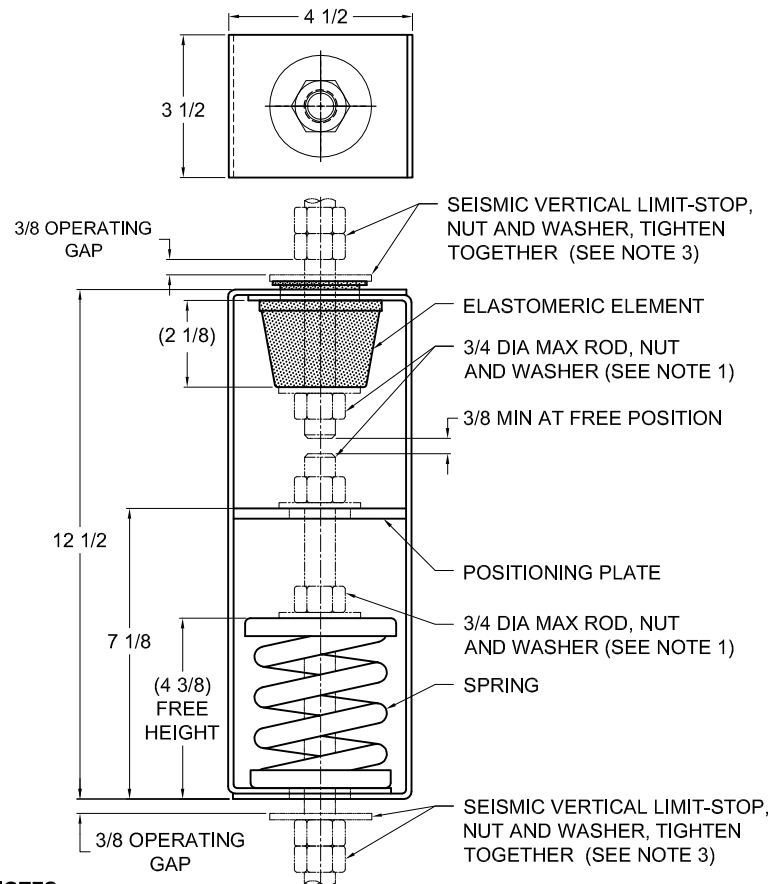


135R-101223 REV.: 4

REV.	DESCRIPTION	DATE	BY

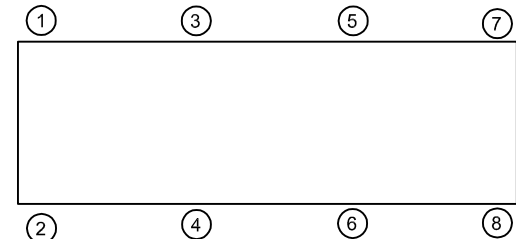
**NOTES:**

1. HANGER RODS, NUTS AND WASHERS, AS SHOWN, NOT BY THE VMC GROUP.
2. STANDARD FINISH: HANGER BOX - PAINTED, POWDER COATED OR GALVANIZED STEEL, SPRING - POWDER COAT.
3. SEISMIC VERTICAL LIMIT-STOP REQUIRED FOR SEISMIC APPLICATIONS. NOT BY THE VMC GROUP. INSTALL WASHER .16 THK. MIN. X 2-1/2 O.D. MIN WITH REQUIRED INSIDE DIAMETER TO ACCOMMODATE ROD SIZE IN USE. THIS CAN BE ACCOMPLISHED BY USING A SINGLE WASHER OR BY STACKING NOT MORE THAN TWO WASHERS.
4. ALL DIMENSIONS IN INCHES. INTERPRET PER ANSI Y14.
5. ALL DIMENSIONS ARE FOR REFERENCE, DIMENSIONS SHOWN AS NOMINAL.
6. ALL SPRINGS ARE DESIGNED WITH MINIMUM 50% OVER-TRAVEL.
7. HANGER BOXES WITH AN ELASTOMERIC ELEMENT HAVE UP TO AN ADDITIONAL 1/2" NOMINAL DEFLECTION.
8. RATED DEFLECTIONS ARE WITHIN 25% OF NOMINAL. HIGHER DEFLECTIONS ARE ALLOWED IF THEY MEET SPECIFICATIONS.

TYPE HRSP-1E ELASTOMERIC & SPRING POSITIONING FOR 1" NOMINAL DEFLECTION					
HANGER	RATED LOAD (LBS)	DEFLECTION (IN)	SPRING RATE (LB/IN)	SPRING COLOR CODE	ELEMENT LOAD & COLOR CODE
HRSP-1E-195	195	2.21	100	DK BLUE	RE-C-380 BLACK
HRSP-1E-400	400	1.70	303	BLACK	RE-C-520 RED
HRSP-1E-530N <sup>1</sup>	530	1.49	453	BLACK/ DK BLUE	RE-C-840 GREEN
HRSP-1E-650	650	1.44	619	RED	RE-C-840 GREEN
HRSP-1E-825N <sup>1</sup>	825	1.56	771	RED/ DK BLUE	RE-C-840 GREEN
HRSP-1E-1000	1000	1.47	1000	TAN	RE-C-1070 GRAY
HRSP-1E-1200N <sup>1</sup>	1200	1.34	1154	TAN/ DK BLUE	RE-C-2000 BLUE
HRSP-1E-1400	1400	1.35	1400	PINK	RE-C-2000 BLUE
HRSP-1E-1700N <sup>1</sup>	1700	1.53	1545	PINK/ DK BLUE	RE-C-2000 BLUE
HRSP-1E-2000	2000	1.61	1802	WHITE	RE-C-2000 BLUE

**NOTES:**

1. TWO NESTED SPRINGS YIELD THIS LOAD. THE COLOR CODE IS FOR OUTER SPRING/ INNER SPRING.

**ISOLATOR SELECTIONS**

LOC 1:	LOC 2:
LOC 3:	LOC 4:
LOC 5:	LOC 6:
LOC 7:	LOC 8:
CUSTOMER EQP'T. TAG:	

NOTE: MATERIAL SHOWN IS FOR (1) SET.

OTHER MATERIALS, COMPOUNDS, OR FINISHES WITH EQUAL OR SUPERIOR PROPERTIES MAY BE SUBSTITUTED AS THEY BECOME AVAILABLE.

**CERTIFIED FOR:**

JOB NAME: \_\_\_\_\_

CUSTOMER: \_\_\_\_\_

CUSTOMER P.O.: \_\_\_\_\_

SALES ORDER: \_\_\_\_\_

MODEL HRSP-1E 195-2000 LBS.  
ELASTOMERIC AND SPRING POSITIONING  
HANGERS  
1 INCH DEFLECTION



**THE VMC GROUP**  
The Power of Together  
Bloomington, NJ 07403  
Houston, TX 77041

SCALE:

NONE

SHEET:



DRAWING NO.:

REVISION