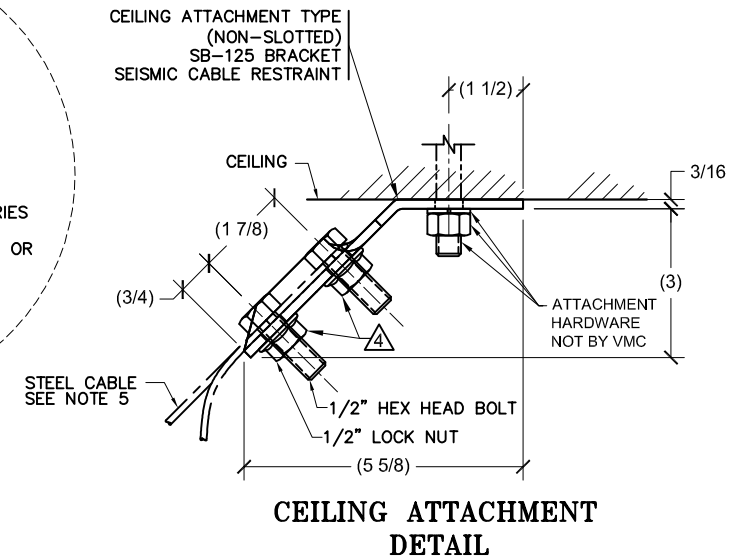
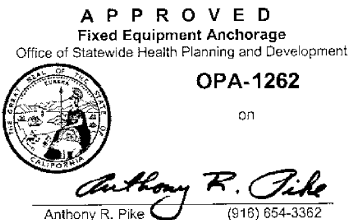
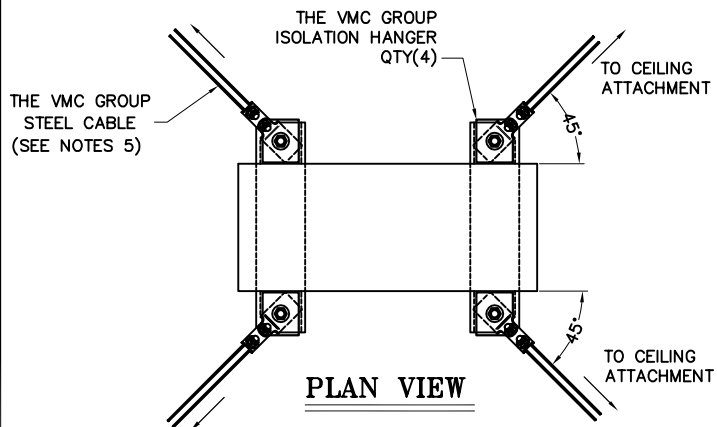
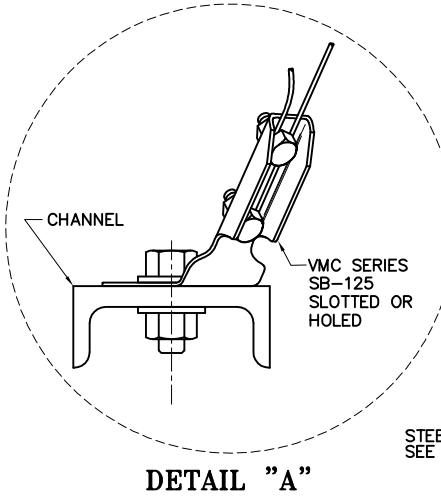
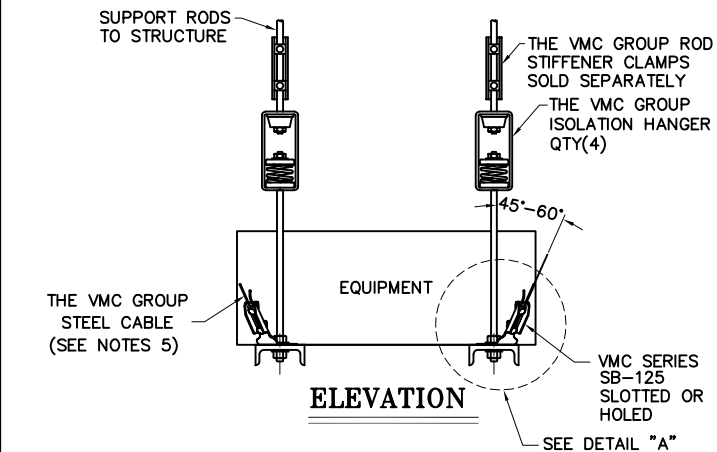


154R-101153 REV.: 9

REV.	DESCRIPTION	DATE	BY

**NOTES:**

- 1) MATERIAL: COLD ROLLED STEEL
- 2) HARDWARE & BRACKETS ZINC ELECTROPLATE
- 3) FIELD TORQUE 1/2" LOCK NUTS TO 75 FT.-LBS.
- 4) SB-125 KITS:
  - SB-125-01 KIT CONSISTS OF 9/16 ASSEMBLY CONSISTING OF : 2 HOLED BRACKETS, 2 SLOTTED BRACKETS 8 BOLTS, 8 SERRATED FLANGE NUTS
  - SB-125-02 KIT CONSISTS OF 11/16 ASSEMBLY CONSISTING OF : 2 HOLED BRACKETS, 2 SLOTTED BRACKETS 8 BOLTS, 8 SERRATED FLANGE NUTS
  - SB-125-03 KIT CONSISTS OF 9/16 ASSEMBLY CONSISTING OF : 4 HOLED BRACKETS 8 BOLTS, 8 SERRATED FLANGE NUTS
  - SB-125-04 KIT CONSISTS OF 11/16 ASSEMBLY CONSISTING OF : 4 HOLED BRACKETS 8 BOLTS, 8 SERRATED FLANGE NUTS
- 5) CABLE SOLD SEPARATELY PN:140360-12.

OTHER MATERIALS, COMPOUNDS, OR FINISHES WITH EQUAL OR SUPERIOR PROPERTIES MAY BE SUBSTITUTED AS THEY BECOME AVAILABLE.

PART NUMBER	"H"	CONSIST OF ASSEMBLIES	COLOR CODE	KIT TYPE
SB-125-01	9/16" BRACKET ASSEMBLIES	154A-100794-01 & -03	CLEAR ZINC COATED	SLOT/HOLE
SB-125-02	11/16" BRACKET ASSEMBLIES	154A-100794-02 & -04	YELLOW ZINC COATED	SLOT/HOLE
SB-125-03	9/16" BRACKET ASSEMBLIES	154A-100794-01 (2X)	CLEAR ZINC COATED	HOLE
SB-125-04	11/16" BRACKET ASSEMBLIES	154A-100794-02 (2X)	YELLOW ZINC COATED	HOLE

**CERTIFIED FOR:**

JOB NAME: \_\_\_\_\_

CUSTOMER: \_\_\_\_\_

CUSTOMER P.O.: \_\_\_\_\_

SALES ORDER: \_\_\_\_\_

**MODEL SB-125 TRANSVERSE AND  
LONGITUDINAL CABLE BRACING  
FOR EQUIPMENT**



**THE VMC GROUP**  
The Power of Together  
Bloomington, NJ 07403  
Houston, TX 77041

SCALE:

NONE

SHEET:

DRAWING NO.:

REVISION

