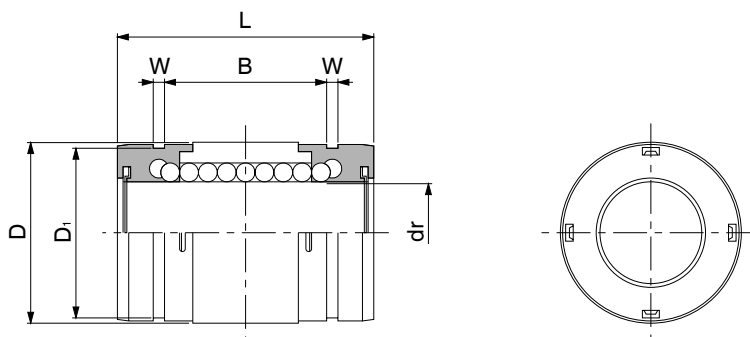


## GW TYPE

### – Single Type –

part number structure		
example	GW	12 UU
GW type		
inner contact diameter		
		Seal
		Blank without seal
		UU seals on both sides



part number	number of ball circuits	major dimensions								basic load rating		mass
		dr		D		L	B	W	D <sub>1</sub>	dynamic C N	static Co N	
		inch	tolerance inch	inch	tolerance inch							
GW 4	4	.2500	0 −.00040	.5000	0/−.00045	.7500	.4329	.0390	.4687	206	265	5.4
GW 6	4	.3750		.6250	0 −.00050	.8750	.5577	.0390	.5880	225	314	7.8
GW 8	4	.5000		.8750		1.2500	.8710	.0459	.8209	510	784	26
GW 10	4	.6250		1.1250	0 −.00065	1.5000	.9920	.0559	1.0590	774	1,180	51
GW 12	6	.7500		1.1250		1.6250	1.0538	.0559	1.1760	862	1,370	72
GW 16	6	1.0000		1.5625		2.2500	1.6187	.0679	1.4687	980	1,570	138
GW 20	6	1.2500	0/−.00050	2.0000	0/−.00075	2.6250	1.8687	.0679	1.8859	1,570	2,740	269

1N ≅ 0.225lbs 1kg ≅ 2.205lbs